

The Passat W8.

Basically, this is the big idea.



Drivers wanted.® 

Your dream
come true.



M.S.R.P. \$37,900*



M.S.R.P. \$38,700*

► **Standard Features**

Inside

- Aesthetically speaking
- Blue and red illuminated instrumentation panel
- Climatronic automatic climate control system
- Pollen and dust filter
- Monsoon® eight-speaker sound system
- Premium in-dash single CD player
- Leather-trimmed comfort seats with height-adjustable head restraints
- Wood-trimmed interior with chrome accents
- Tinted glass
- Rear sunshade (sedan only)
- Cooled, illuminated lockable glove box
- Self-dimming rear view mirror
- Dual illuminated interior vanity mirrors

For your convenience

- Multifunction trip computer
- HomeLink® with sunvisor extension
- Heatable, front eight-way power seats with three-position memory on driver's seat
- Leather-wrapped, multifunction steering wheel with security lock
- Cruise control
- Power windows
- Power sunroof with pinch protection
- Remote releases for fuel filler door and trunk
- Center front armrest with storage compartment
- Front beverage holders integrated into center console
- Rear center armrest with integrated beverage holders
- Dual rear reading lights
- Fully lined trunk space
- Power outlet in trunk

Outside

- Front to back
- Clear lens Bi-xenon GDL headlamps
- Headlamp washer system integrated into front bumper
- Projector lens foglamps integrated into front bumper
- Clear lens side blinker lights on front fenders
- Rain sensor controlled intermittent Aero windshield wipers
- Heated windshield washer nozzles
- Heatable, power remote folding exterior mirrors
- Spare tire
- Dual exhaust system with chrome tips
- 16 inch alloy wheels

► **Measurements**

Sedan Measurements:

- Wheelbase:** 106.4 inches
- Overall Length:** 185.2 inches
- Width:** 68.7 inches
- Height:** 57.5 inches
- Front Headroom:** 37.8 inches
- Rear Headroom:** 37.3 inches
- Front Shoulder Room:** 55.8 inches
- Rear Shoulder Room:** 54.6 inches
- Front Legroom:** 41.5 inches
- Rear Legroom:** 35.3 inches
- Passenger Volume:** 93.0 cubic feet
- Cargo Area:** 10.0 cubic feet

Wagon Measurements:

- Wheelbase:** 106.4 inches
- Overall Length:** 184.3 inches
- Width:** 68.7 inches
- Height:** 58.9 inches
- Front Headroom:** 37.8 inches
- Rear Headroom:** 37.9 inches
- Front Shoulder Room:** 55.8 inches
- Rear Shoulder Room:** 54.6 inches
- Front Legroom:** 41.5 inches
- Rear Legroom:** 35.3 inches
- Passenger Volume:** 93.0 cubic feet
- Cargo Area:** 36.0 cubic feet

LEATHER SEATS

There are a lot of stitches out there that can only dream of being flanked by leather of such quality.

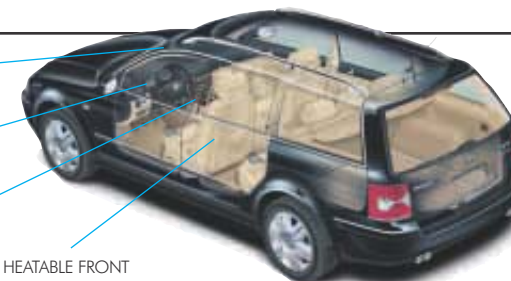


HOMELINK®

MODIFIED INSTRUMENTATION PANEL

CHROME AND WOOD ACCENTS

HEATABLE FRONT EIGHT-WAY POWER SEATS



*Prices exclude taxes, destination charges, optional equipment, registration and dealer charges. Emission charges may vary by state. Dealer sets actual price.

Sure sounds
good to me.



THE W8 ENGINE

We gave the Passat some 8-cylinder power without giving it a standard V8 engine. In short, the W8 isn't for the fainthearted. Prepare to be moved.



Tech Specs

Engines: 4.0 litre, 270 horsepower, 8-cylinder

Transmission: 5-speed automatic with Tiptronic®

Suspension: 4-link front suspension, coil springs, telescopic shock absorbers, stabilizer bar and rear fully independent double wishbone suspension

Brakes: ABS (anti-lock) power-assisted, vented front discs with solid rear discs

Tires: 215/55R16H tires on 16 inch alloy wheels

Performance:

0 – 60 mph (sedan) 6.5 seconds

0 – 60 mph (wagon) 6.7 seconds

Top Speed 130 mph

Additional Features

German engineered, of course

4MOTION™ permanent all-wheel drive system

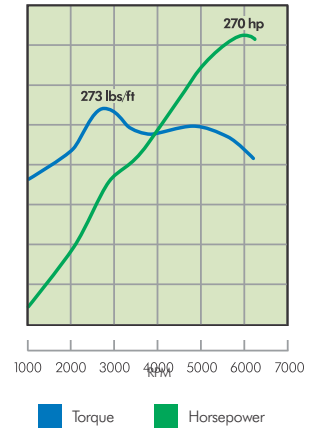
Power-assisted rack and pinion steering

Laser beam-welded, unitized construction, fully galvanized steel body

ABS brakes

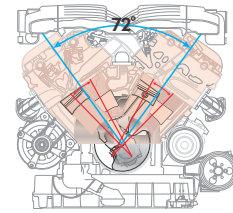
ESP (Electronic Stabilization Program)

Torque and Horsepower



Transmission

Clutch	Converter with lock-up clutch
Gearbox	5-speed automatic with Tiptronic®
Ratios:	
First Gear	3.67:1
Second Gear	2.00:1
Third Gear	1.41:1
Fourth Gear	1.00:1
Fifth Gear	0.74:1
Reverse	4.10:1



The Vs that make up the W are positioned at 72° angles. Besides saving space, they also play a large part in that hushed whoosh you get.

Get a grip
on
terra firma.



THE W8 AND 4MOTION™

4MOTION™ safely keeps you where you should be. On the road.

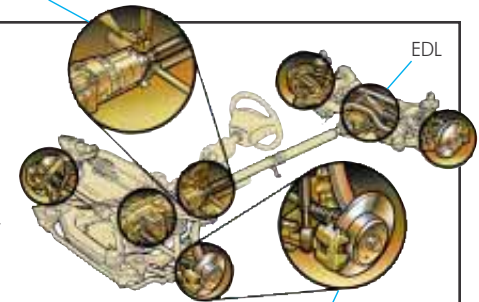


4MOTION™

An intelligent form of all-wheel drive technology that brings to the road an even sweeter driving experience. It's based on the principle that the better your car is connected to the road, the better performance your car will give you. **It instantaneously manages power and traction to wherever they're needed most.**

Let's say a tire momentarily loses some grip and starts to slip: the other three will compensate and immediately work to get the car back on track. No driver involvement is needed, so you're free to just concentrate on enjoying the drive. You get improved control and therefore added safety. So not only can you enjoy coming out of those turns with extra precision and polish, you can steer around unexpected trouble too.

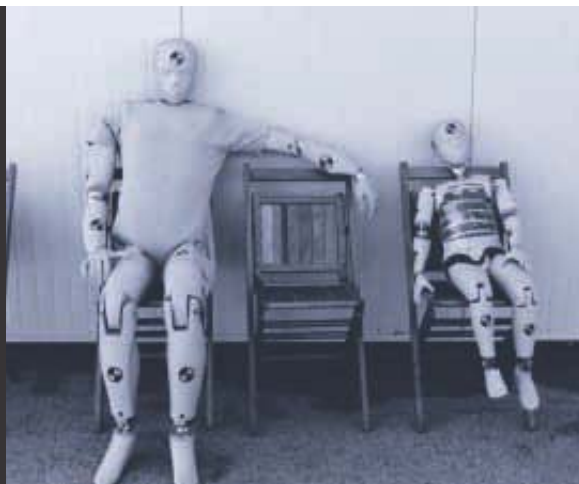
TORSEN® DIFFERENTIAL



ABS

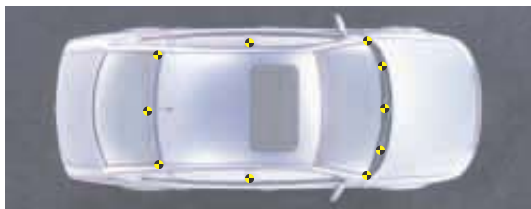
4MOTION™ is made up of three major components: ABS (Anti-Lock Brake System), EDL (Electronic Differential Lock), and the Torsen® Differential. To see how they all work together, just visit vw.com/4MOTION

Sleep easy
at night.



THE W8 AND SAFETY

The body has been strengthened for torsional rigidity. As for safety features, there's plenty to go around.



The W8 has been structurally reinforced in key points around the cabin.

► Warranty

Roadside Assistance:

4-year/50,000-mile* 24-hour roadside assistance†

Basic New Vehicle Limited Warranty‡:

4 years/50,000 miles*

Powertrain Limited Warranty:

5 years/60,000 miles*

Anti Corrosion:

12-year unlimited mileage Limited Warranty Against Corrosion Perforation

*Whichever occurs first. †Roadside assistance is provided by AAA and its member clubs. ‡Wear & tear items and adjustments excluded after initial 12 months/12,000 miles (whichever occurs first).



► Safety and Security

Play it safe

- Daytime running lights
- Dual front and front side impact airbags**
- Side Curtain Protection™***
- Telescoping, height-adjustable steering column (collapsible upon impact)
- Three rear seat height-adjustable head restraints
- Front and rear three-point safety belts**
- CSTAP System (Child Seat Tether Anchorage Points)
- LATCH System compatible (Lower Anchorage Tethers for CHild seats)

Lock-down

- Central power locking system
- Automatic locking feature at 8 mph
- Vehicle anti-theft alarm system
- Immobilizer theft deterrent system (Transponder III)
- Remote folding keys with programmable seat and mirror settings
- Valet key
- Child safety locks on rear doors
- Trunk escape handle (sedan only)
- Anti-theft wheel locks

Volkswagen of America, Inc. believes the information and specifications in this brochure to be correct at the time of viewing. Specifications, standard features, fabrics and colors are subject to change without notice. Some features may be unavailable when your vehicle is built. Ask your dealer about the availability of options and verify that the vehicle you ordered includes the equipment you ordered. Tires are supplied and warranted by their manufacturer. "Volkswagen," the Volkswagen logo and "Passat" are registered trademarks of Volkswagen AG. "4MOTION" and "Side Curtain Protection" are trademarks of Volkswagen AG. "Drivers wanted." is a registered trademark of Volkswagen of America, Inc. Torsen is a registered trademark of Zexel-Gleason USA, Inc. HomeLink is a registered trademark of the Prince Corporation, Holland, Michigan. Prince is a wholly owned subsidiary of Johnson Controls.™ For further information regarding any Volkswagen model check out another page here at vw.com. ©2002 Volkswagen of America, Inc.



**Airbags are supplemental restraints only. Always use safety belts. Seat children only in the rear, using restraints that are appropriate for their size and age.