

⚠ Connection offline

Technical product information

Oil warning light on

Transaction No : **2016429/2**

Release date: 29-Jan-2008

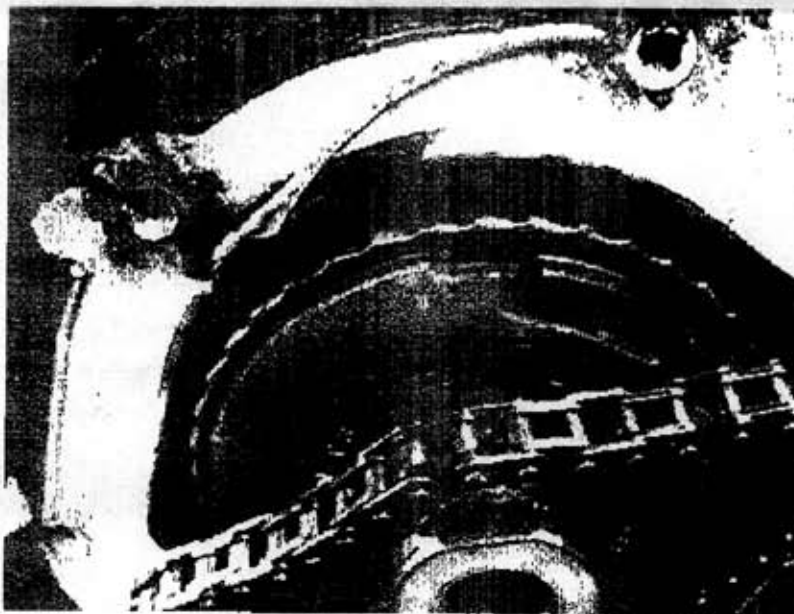
Customer statement / workshop findings

The oil pressure warning light comes on in stationary/when driving.

Rattling noises in the engine area.

Technical background

Conflicting tolerances lead to wear of the teeth of the gear wheels; as a result, the chain slips through.
No oil supply because of missing drive or oil pump



Production change

No change

Engine with chain drive for balancer shafts not built any more.

Measure

Before the repair perform the following work:

Check whether the engine still cranks.

- Check oil level
- Check oil pressure.

If there is no oil pressure, carry out the following work;

Remove oil sump.

visual check of the compents (chain, module parts)

- Check the bearings of crankshaft and con rod.

(With bearing damage assess the overall damage according to the technical requirements.)

If the bearings are correct continue with the instructions below.

Note:

By removing the oil sump not all compents of the chain drive on the engine block can be seen. if no damage is found in the lower part of the chain drive, for safety reasons the sealing flange and the cover for the lower toothed ring must also be removed.

If the chain wheel on the crankshaft/chain drive is damaged, perform the following work:

- Replace the chain wheel on the crankshaft with a spur gear (see repair manual).
- Replace the balancer shaft with chain drive with the version with spur gear drive (see repair manual).
- Change the engine oil and the oil filter.

Note:

The turbo charger must be checked in every case (lack of oil).

Accounting instructions

Service number / damage code/ manufacturer: 1392 / 10

Accounting in APOS

Volkswagen Passat 3C*

Main operation Associated operation	Repair operation	Designation	Time units
Main operation	17051938	Remove and install oil pressure switch	40 TU
Associated operation	17030150	Check oil pressure	30 TU
Associated operation	13300299	Check big-end bearing and crankshaft bearing	130 TU
Main operation	13855599	Replace balancer shaft	470 TU
Associated operation	13855599	Repiace chain wheel with spur gear	40 TU
Associated operation	21300199	Check turbo charger	30 TU
Associated operation	17305599	Replace oil filter	10 TU

The necessary time for using the VAS tester are **not included in the above times; they are kept**

separate.

Use the above times only for this TPI.

Accounting in APOS/2

Remove and install oil pressure switch

Illustration	Position	Activity	Time units
T10-00	4	98	40 TU

check oil pressure

Illustration	Position	Activity	Time units
T10-00	3	98	30 TU

Check big-end bearing and crankshaft bearing

Illustration	Position	Activity	Time units
T10-00	13	98	130 TU

Replace balancer shaft

Illustration	Position	Activity	Time units
T10-00	47	98	470 TU

Replace chain wheel with spur gear

Illustration	Position	Activity	Time units
T10 00	1	98	40 TU

Check turbo charger

Illustration	Position	Activity	Time units
T10-00	3	98	30 TU

Replace oil filter.

Illustration	Position	Activity	Time units
T10-00	1	98	10 TU

The necessary time for using the VAS tester are not in the above times; they are kept separate.

Use the above times only for this TPI.

Parts information

Spur gear on the crankshaft approved for VW with part number 03G 105 212 C.
individually available.

Customer information

Multi-supersession-Supersession Components

Dealer: E00424140

Material: 03G103295A Description: HOUSING

Component	Description	Quantity
03G103295Q	HOUSING	1
03G105212C	GEAR	1
N 90977502	BOLT	1
N 91121301	BOLT	4
03G103305C	GEAR	1
N 91123401	BOLT	1

Close

Informational photo of B5.5 Oil pump assemblies



This is a side by side comparison photo of the older oil pump chain and the oil pump gear along with assorted parts for the conversion.