



Part number

561 052 186 A

USA: Distributed by  
Volkswagen of America, Inc.  
Auburn Hills / Mi.

Equipment supplied is subject to alteration

Printed in Germany  
by Volkswagen Zubehör GmbH

Vehicle:

VW Passat

08/11 >>

## USA

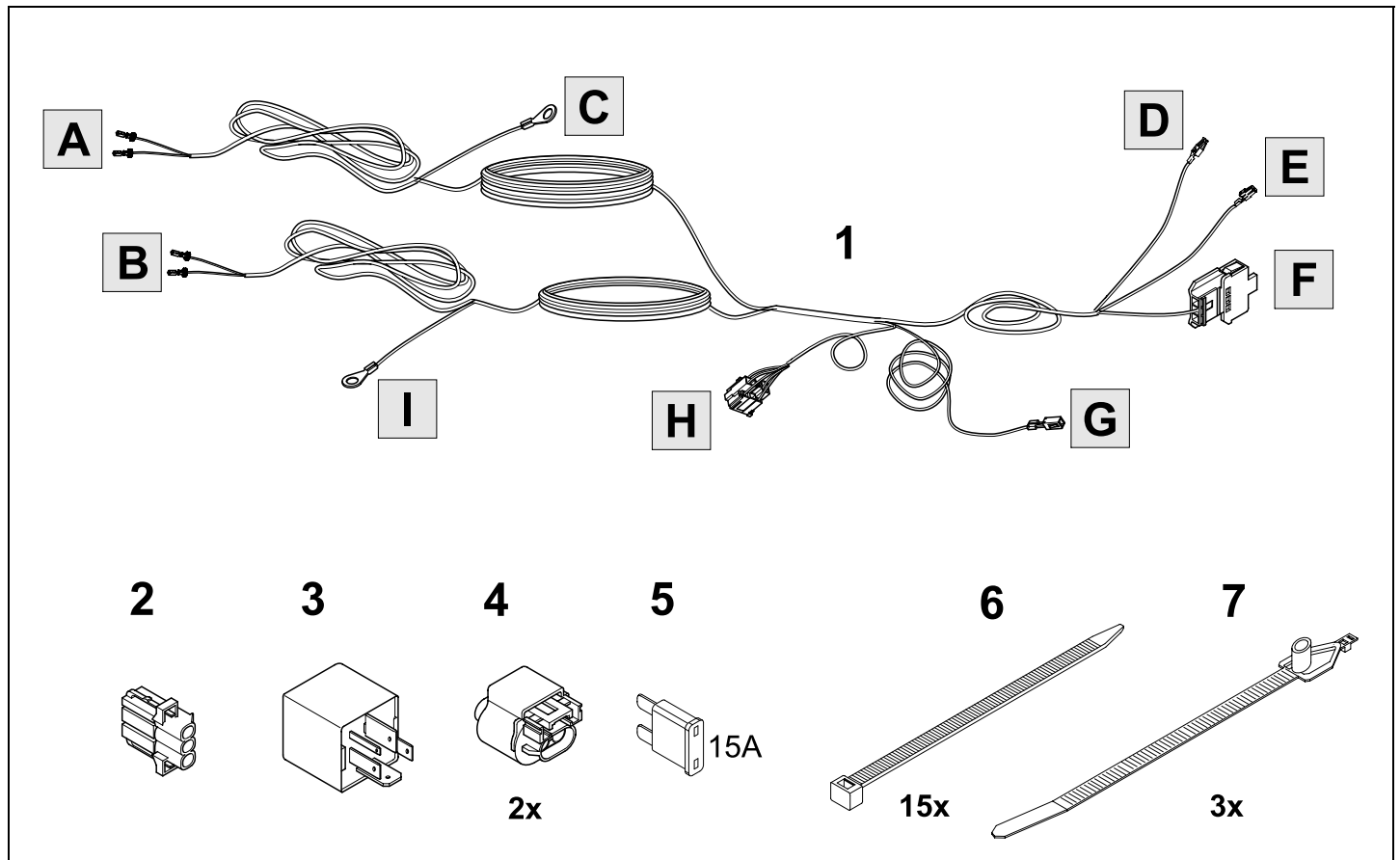
Safety regulations and precautions → see page two



## WARNING !

This fog light kit should be used only in vehicles with halogen head lamps, and must not be used in vehicles with gas-discharge (Xenon) head lights. Otherwise, the vehicle's electronics will be damaged seriously!

## Content / Parts contained in this kit





# WARNING !

## Installation procedures

- Read entire instructions thoroughly before starting work
- Improper installation procedures can cause serious personal injury
- Installation should be performed by a qualified technician only
- Keep unqualified persons and children away from the vehicle while working on the vehicle
- Observe all safety precautions when working under a vehicle
- Beware of sharp edges
- Always wear safety glasses to protect eyes
- Always wear protective gear as gloves and use caution when using hand tools

## Work tidy and clean

- Before starting make sure painted and trim surfaces are protected to avoid scratching during installation process of the items
- Use proper surface protection covers, work without attire and free of dirt and grease

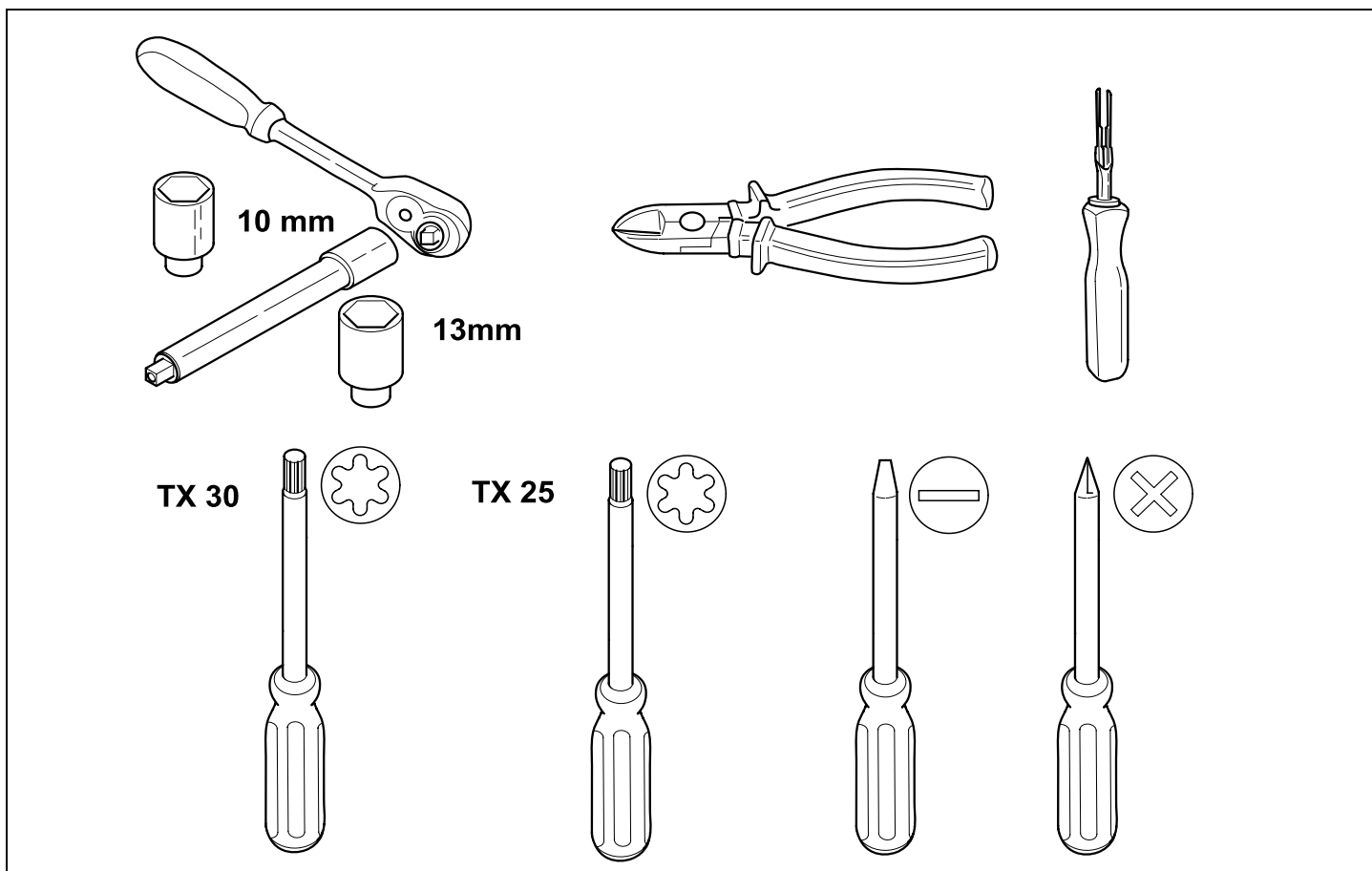
## Engine compartment

- Do not work on the vehicle while the engine is running
- The engine compartment of any motor vehicle is a potential dangerous area and can cause serious personal injury, hot vehicle components can cause serious burns
- When working in a hot area of the vehicle, always let components cool down before starting any work
- Always use extreme caution when doing any work in the engine compartment. Always follow commonly accepted safety practices and use common sense. Never risk personal injury
- Always let the engine cool down completely before carefully opening the engine compartment, hot components will burn skin on contact

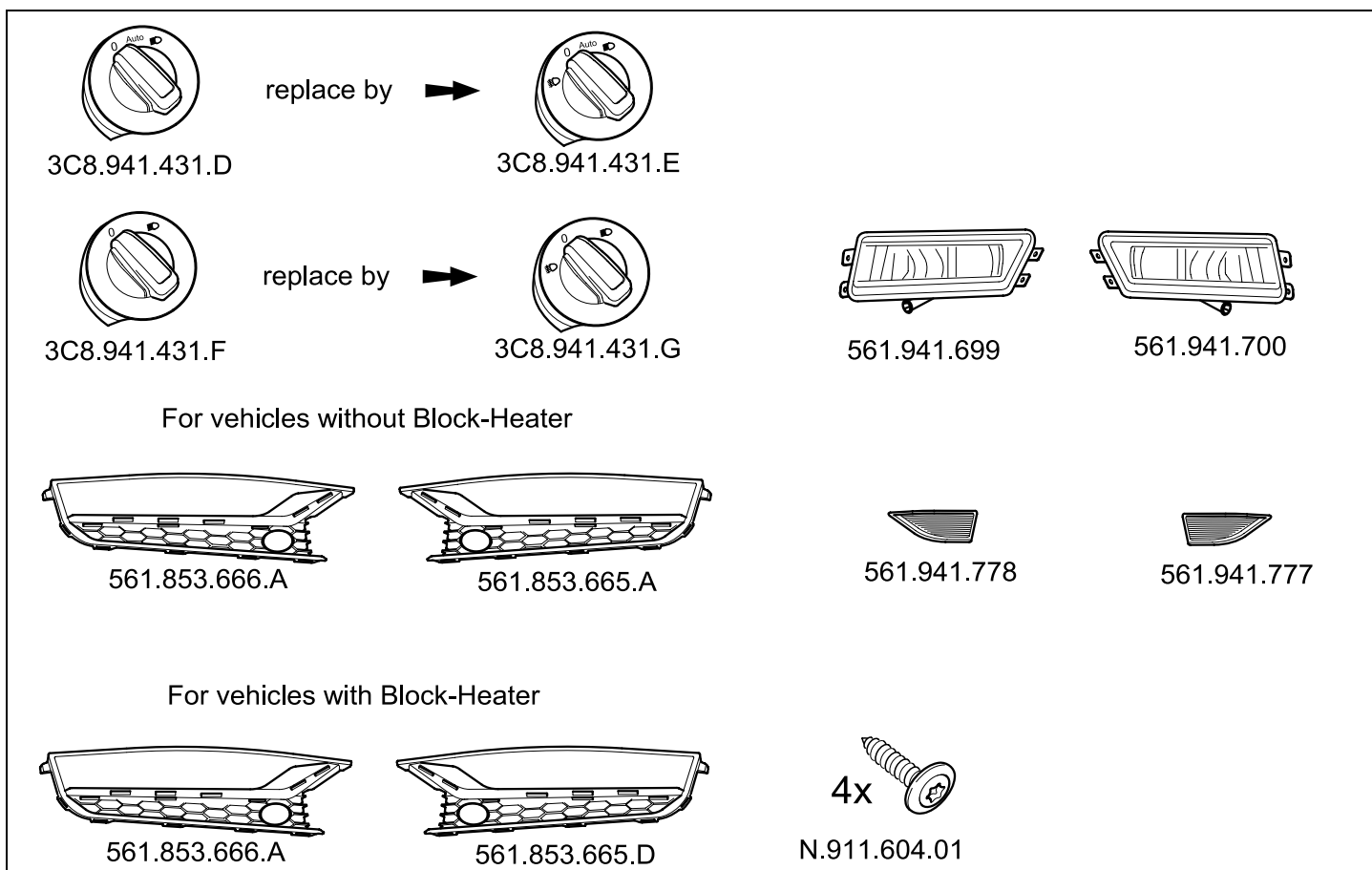
## Electrical system

- Working on the battery or the electrical system in any vehicle can result in serious acid burns, fires or electrical shocks. Always read and heed the following warnings and safety precautions before working on the battery or the electrical system:
- Before working on the electrical system, always switch off the ignition and all electrical consumers and disconnect the negative (-) earth cable from the battery first
- Always keep children away from acid and the battery
- Always wear eye protection. Never let battery acid or lead particles contact your eyes, skin and clothing
- Sulfuric acid is very corrosive and can cause blindness and damage to unprotected skin. Always wear protective gloves and eye protection. To reduce the risk of injury, never tilt the battery, as this could spill acid through the vents and may cause burns
- When disconnecting the battery from the electrical system, always disconnect the negative earth cable (-) first and then the positive cable (+)
- Always avoid fires, sparks, open flames and smoking. Always avoid generating sparks and electrostatic charges when handling cables and electrical equipment. Never short circuit the battery poles. High energy sparks can cause serious personal injury
- Always switch off all electrical consumers before reconnecting the battery. Reconnect the positive cable (+) first and then the negative earth cable (-). Never reverse the polarity of these connections. This will cause a fire or a battery explosion

## Required tools



## Additional parts required





## **NOTE !**

**The parts which are depicted in the previous figure are not contained in this kit and must be obtained separately.**

**These are in detail:**

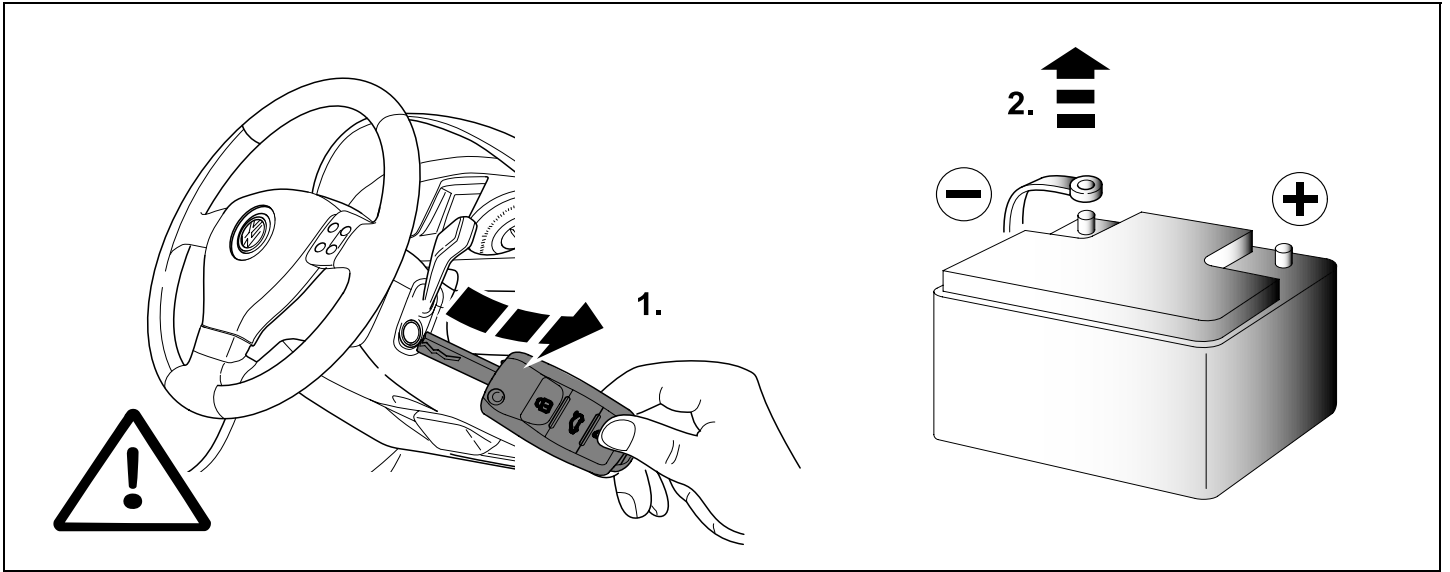
- **Rotary light switch (3C8.941.431.E respectively 3C8.941.431.G)**
- **Cover parts (561.853.666.A, 561.853.665.A respectively 561.853.665.D)**
- **Trims (561.941.778, 561.941.777)**
- **Screws (N.911.604.01)**
- **Fog lamps (561.941.700, 561.941.699)**

**The existing rotary light switch should be replaced by the respective rotary light switch with the additional function "fog lights on" (refer to previous figure)**

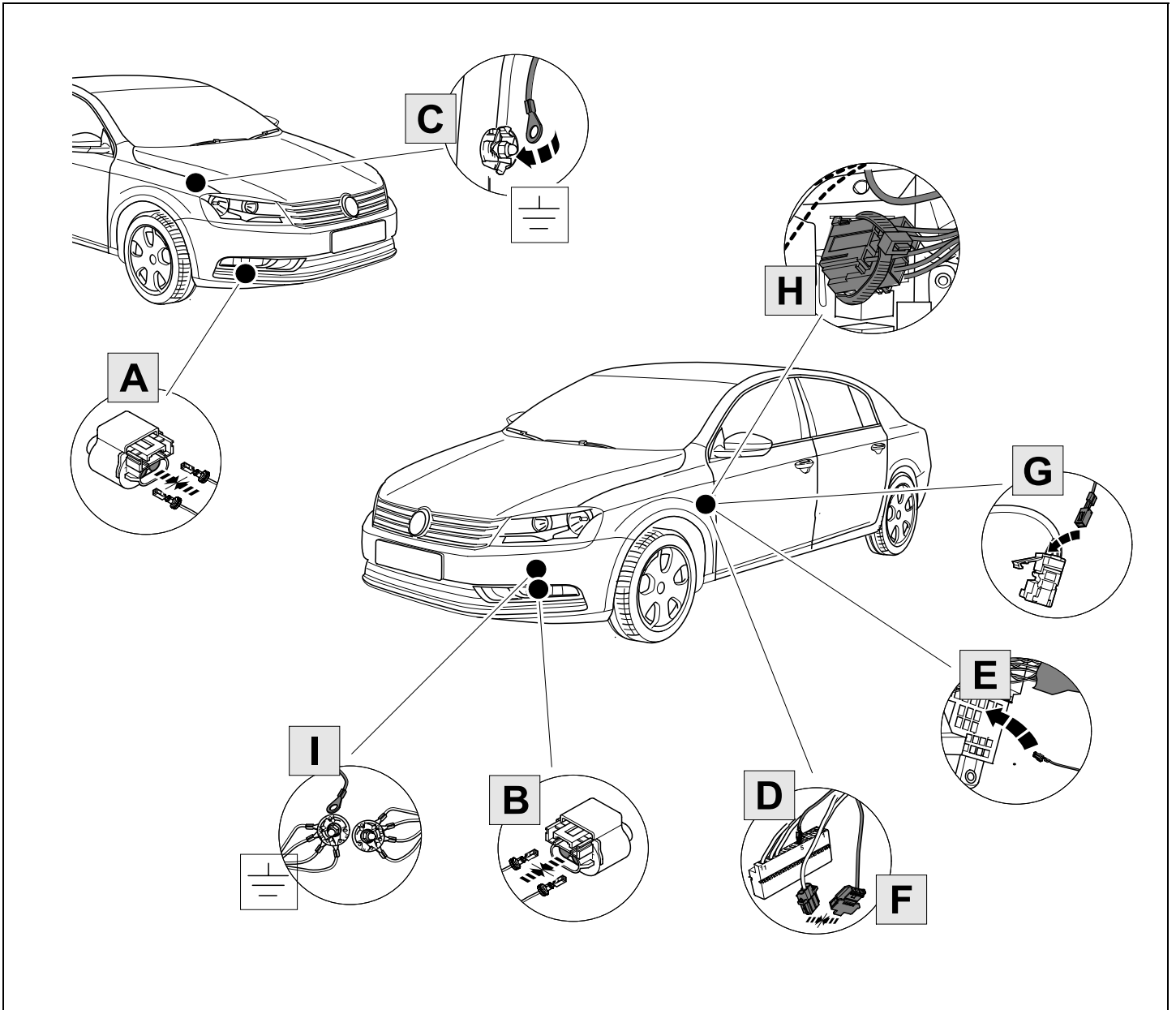
**The chromed moldings (partnumbers 561.853.102, 561.853.101) should be removed carefully from the existing cover parts and clipped into the new ones**

**Before installing this kit the actuality of all work steps and all part numbers should be checked in ETKA and ELSA**

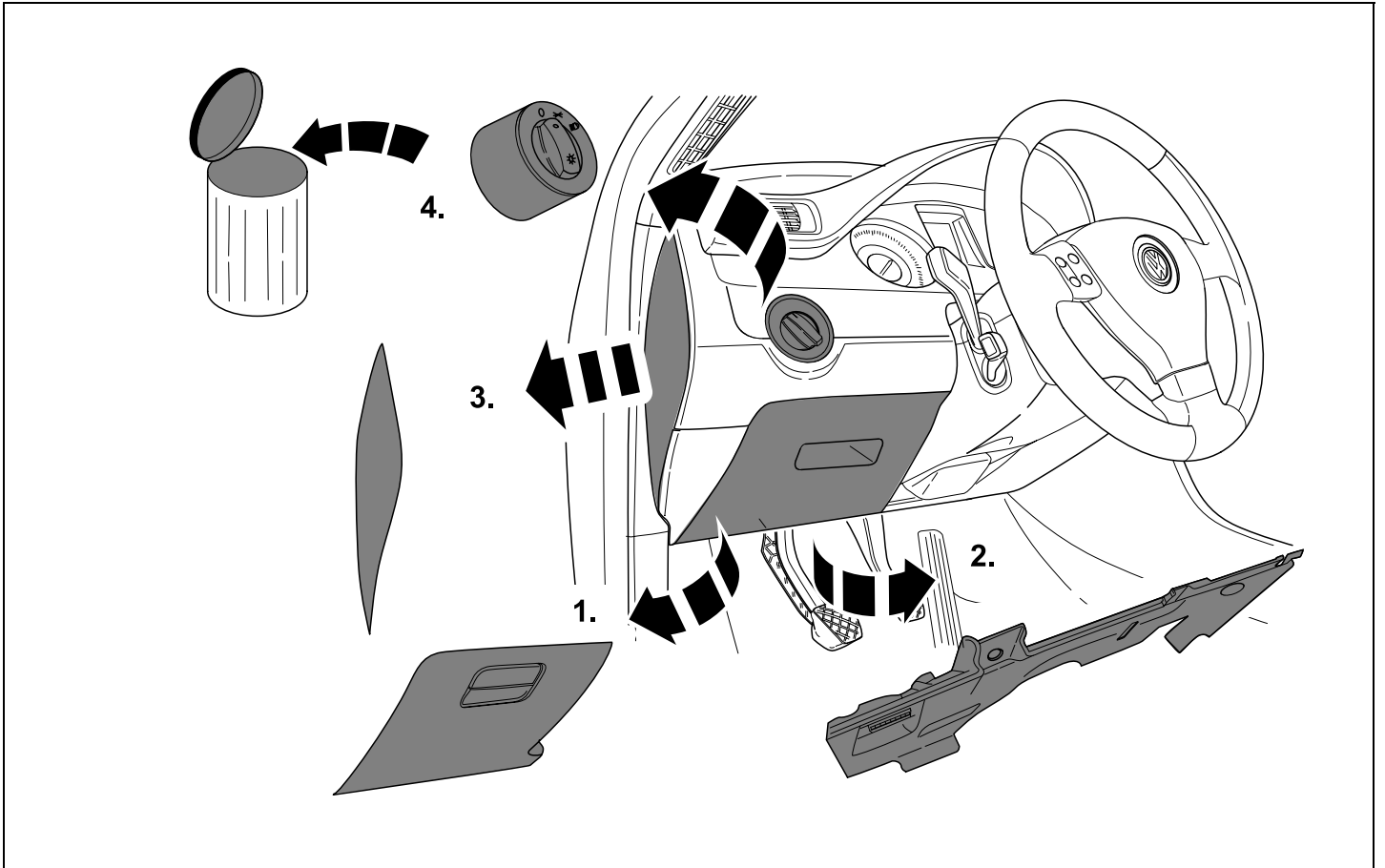
# 1 Remove ignition key and disconnect battery earth cable



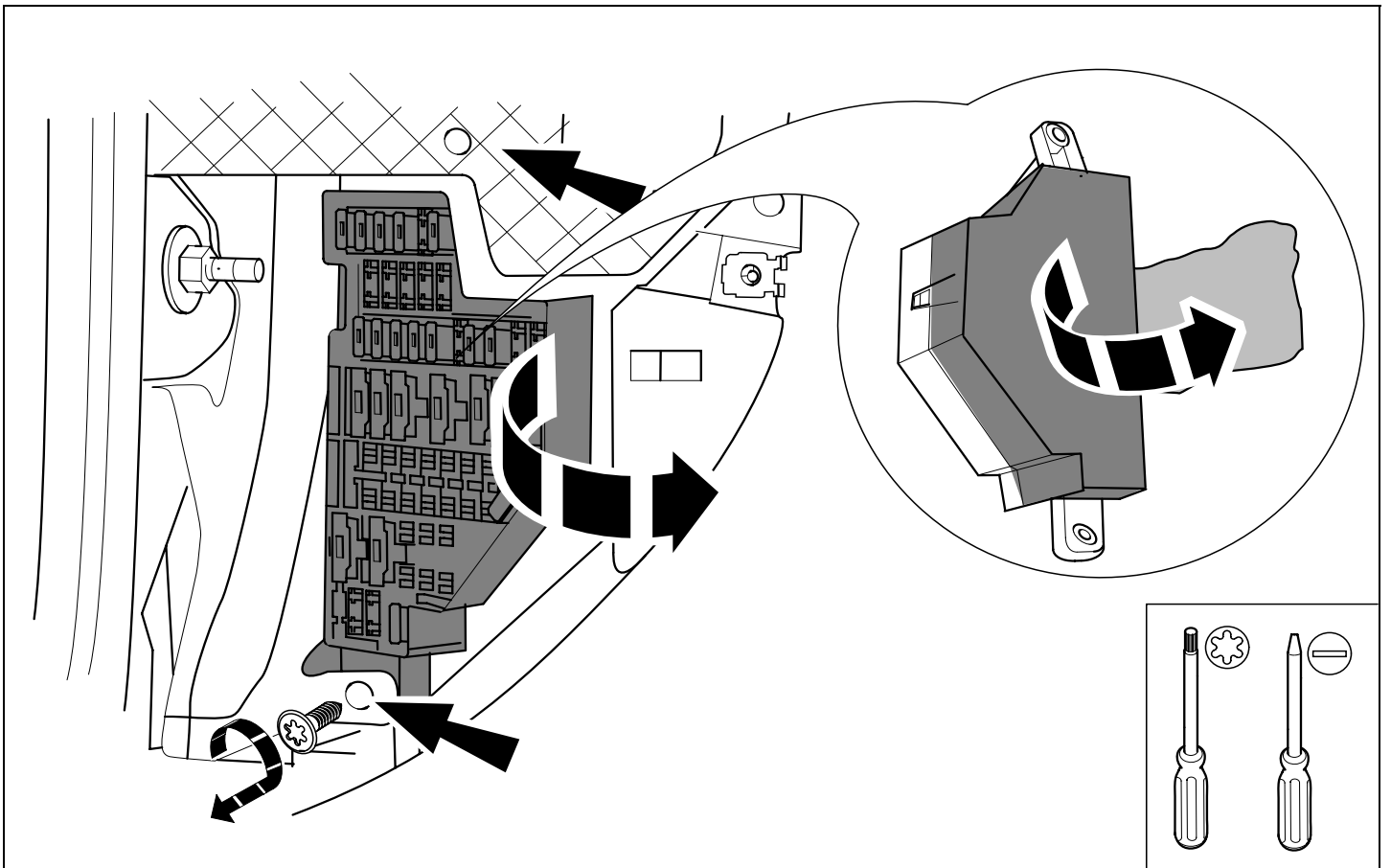
# 2 General installation overview



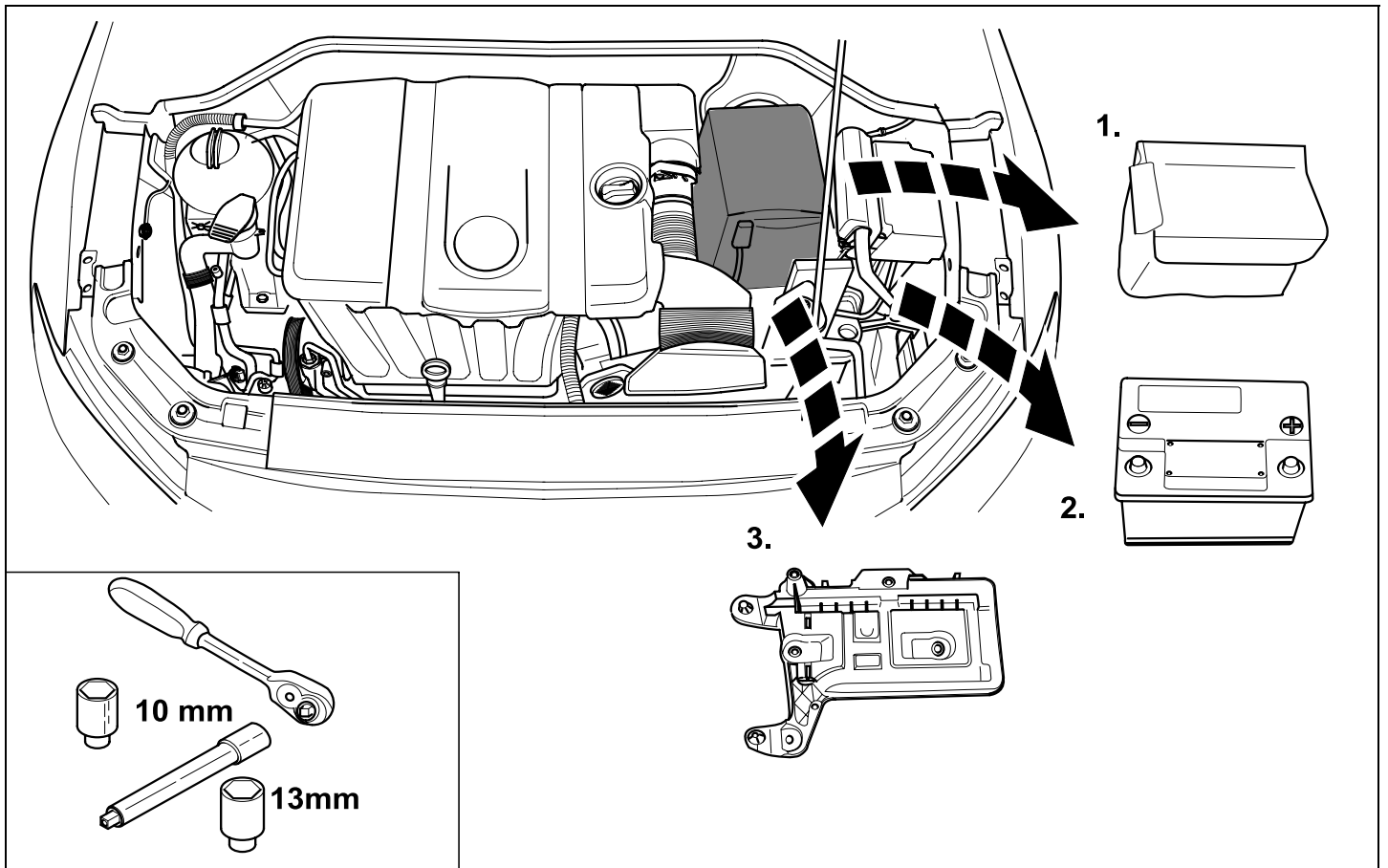
### 3 Interior parts to be removed



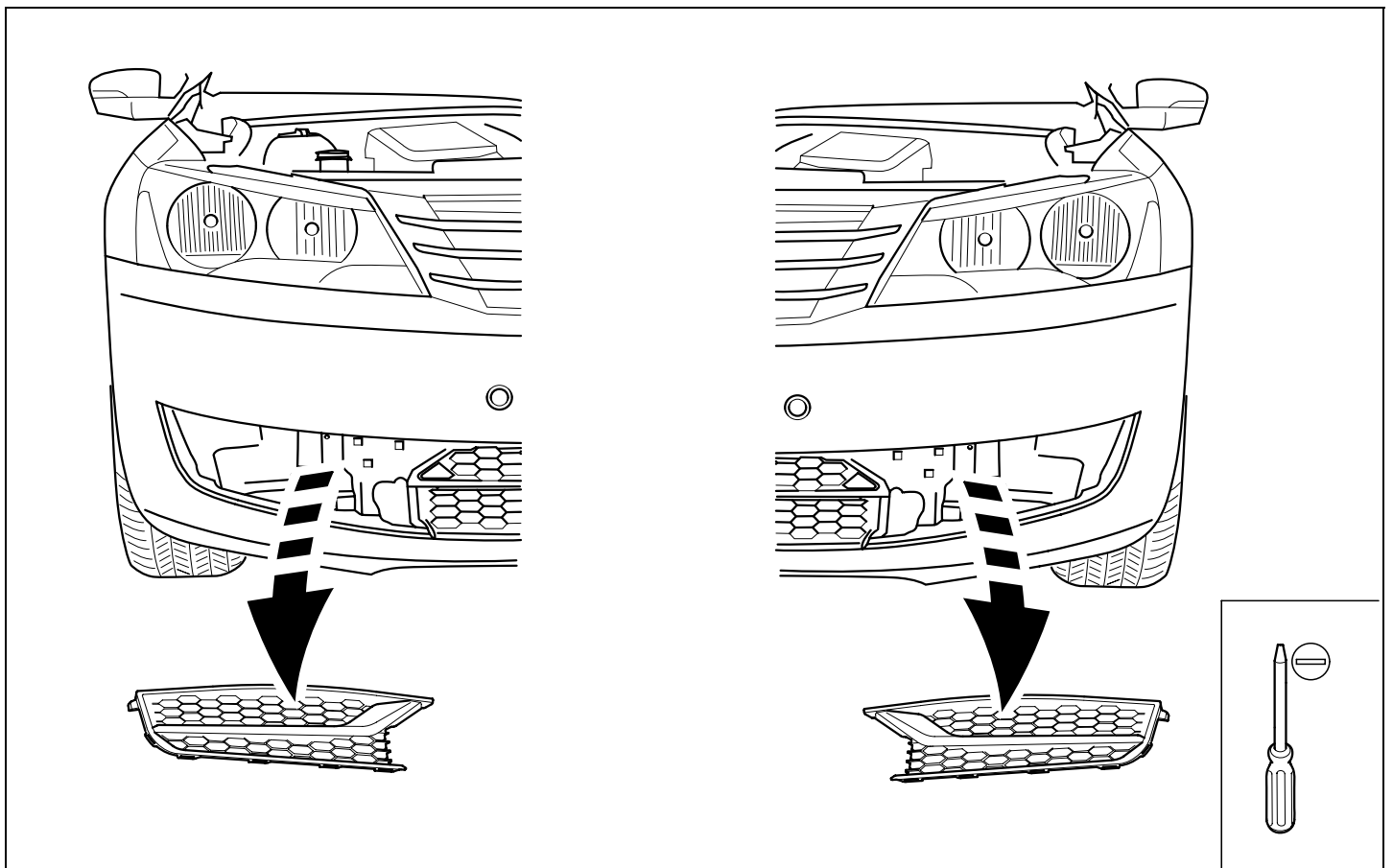
### 4 Removal of the fuse box



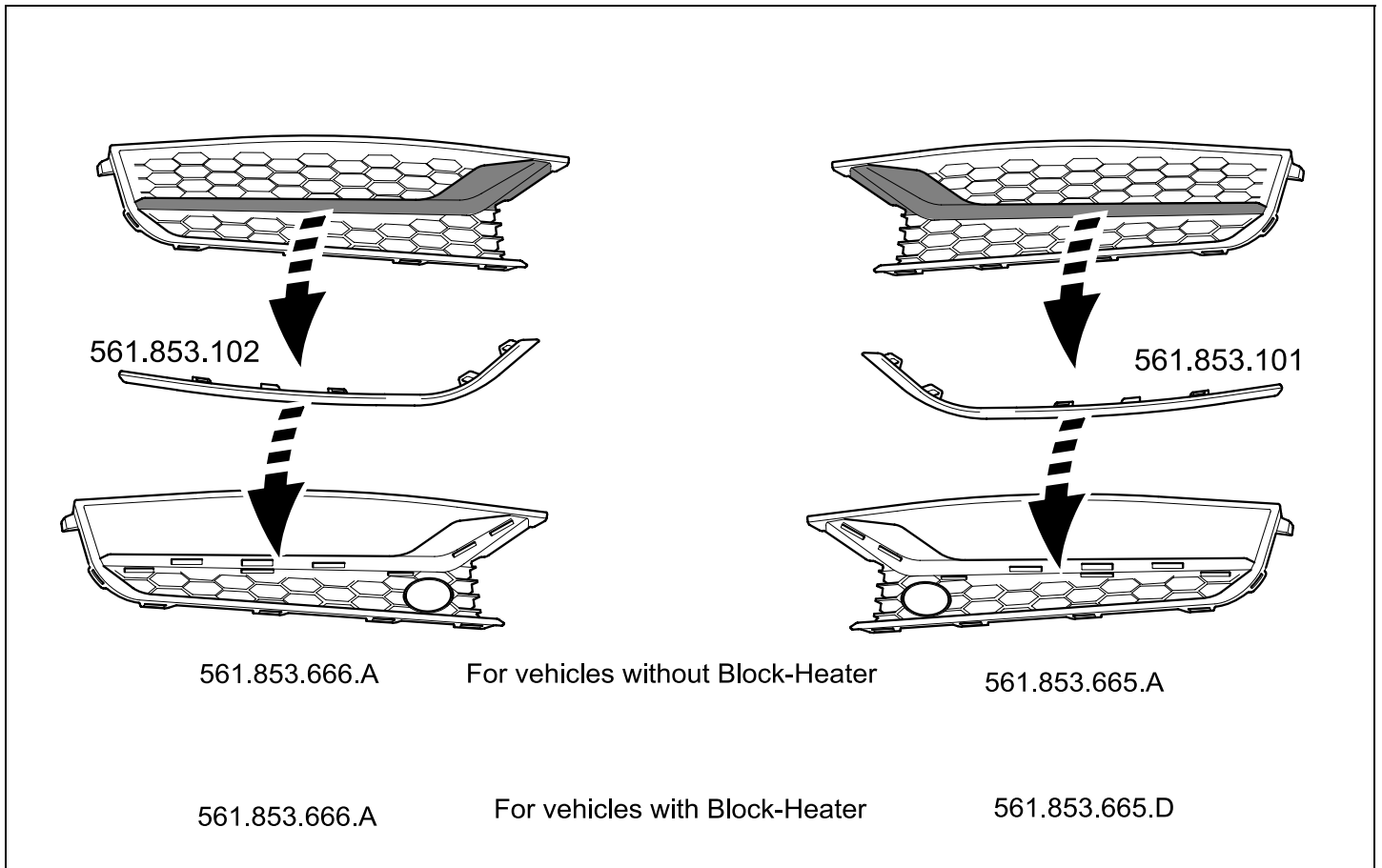
## 5 Engine compartment parts to be removed



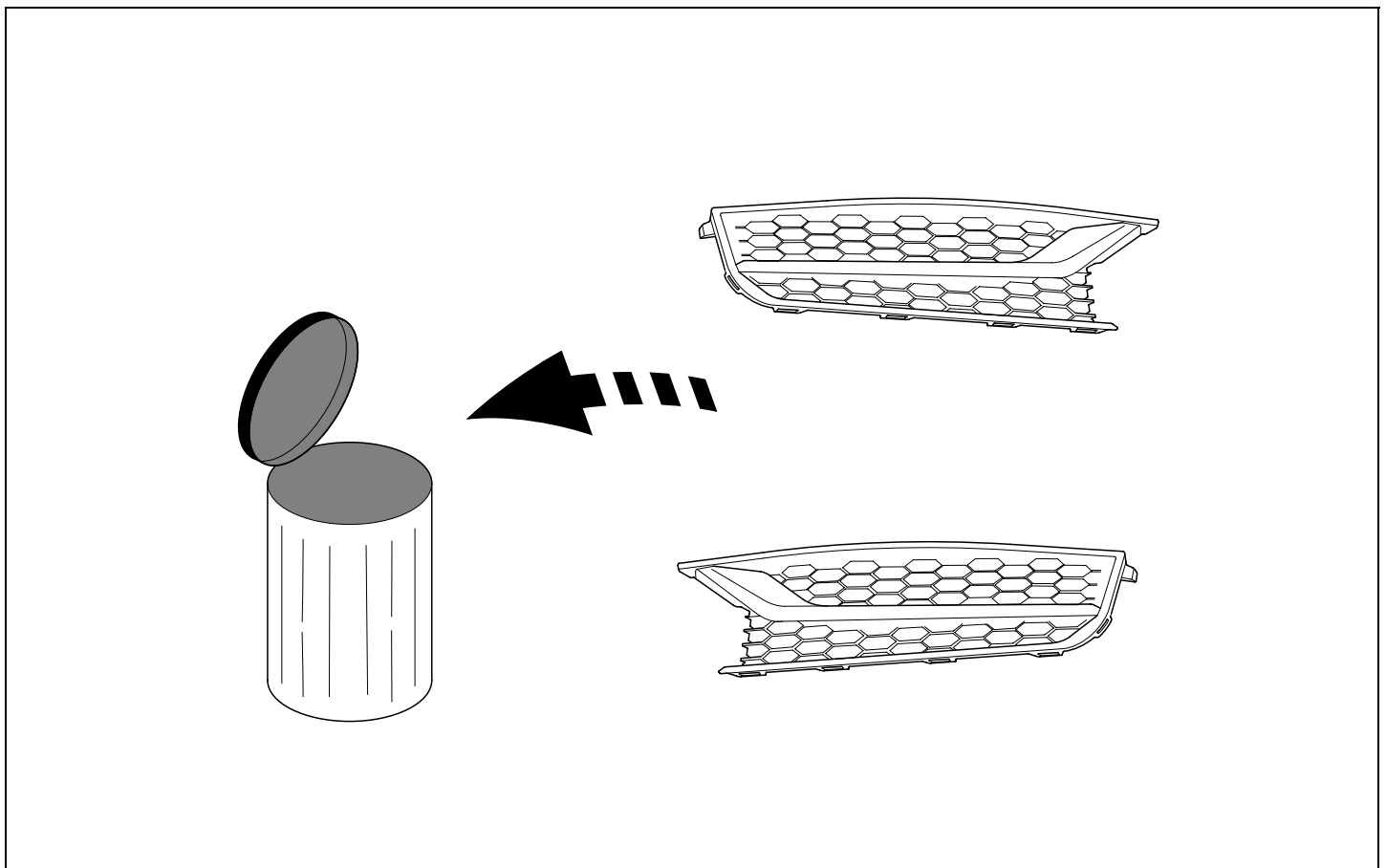
## 6 Remove cover parts



## 7 Convert moldings

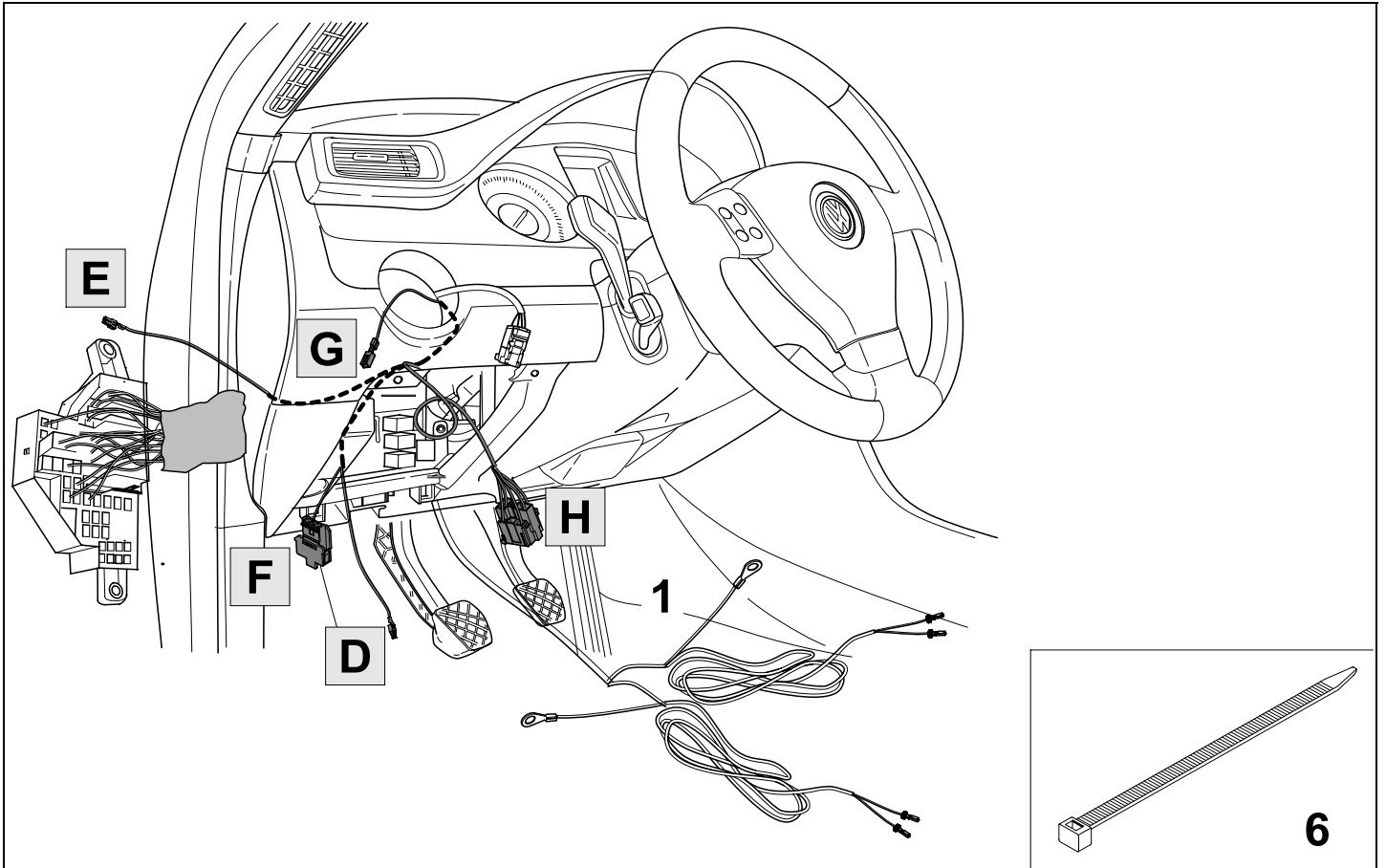


## 8 Dispose cover parts

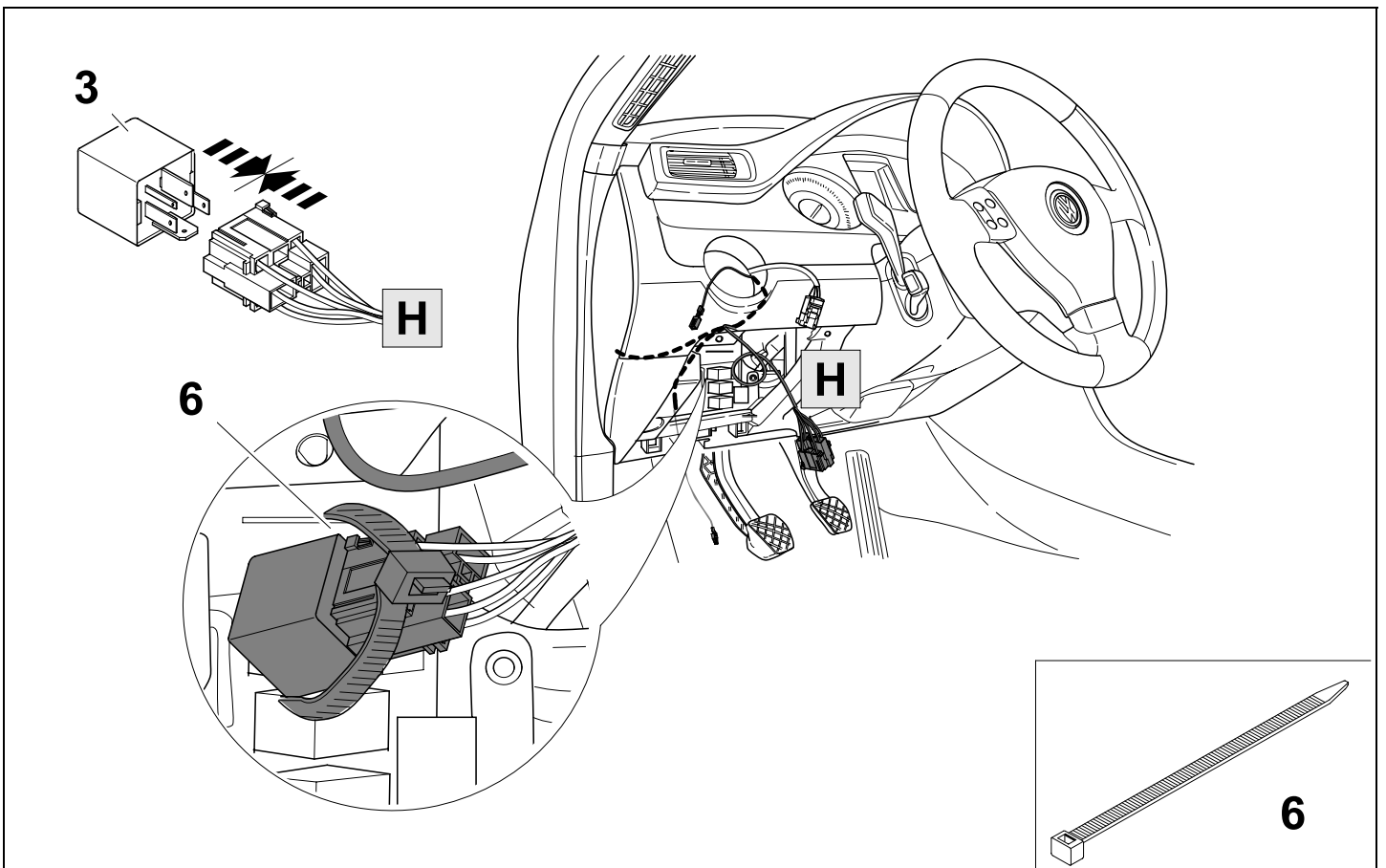




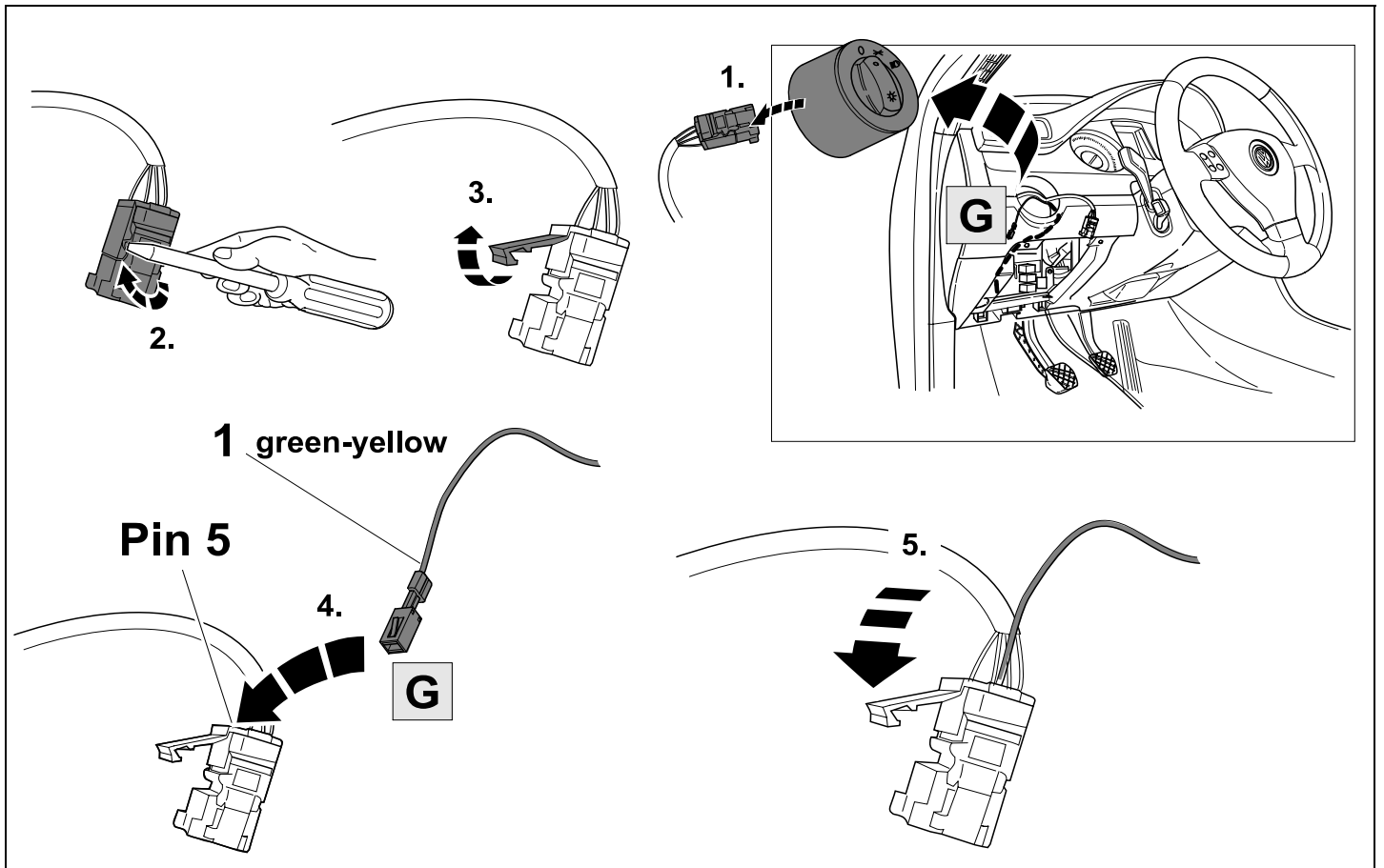
## 9 Installation overview inner compartment



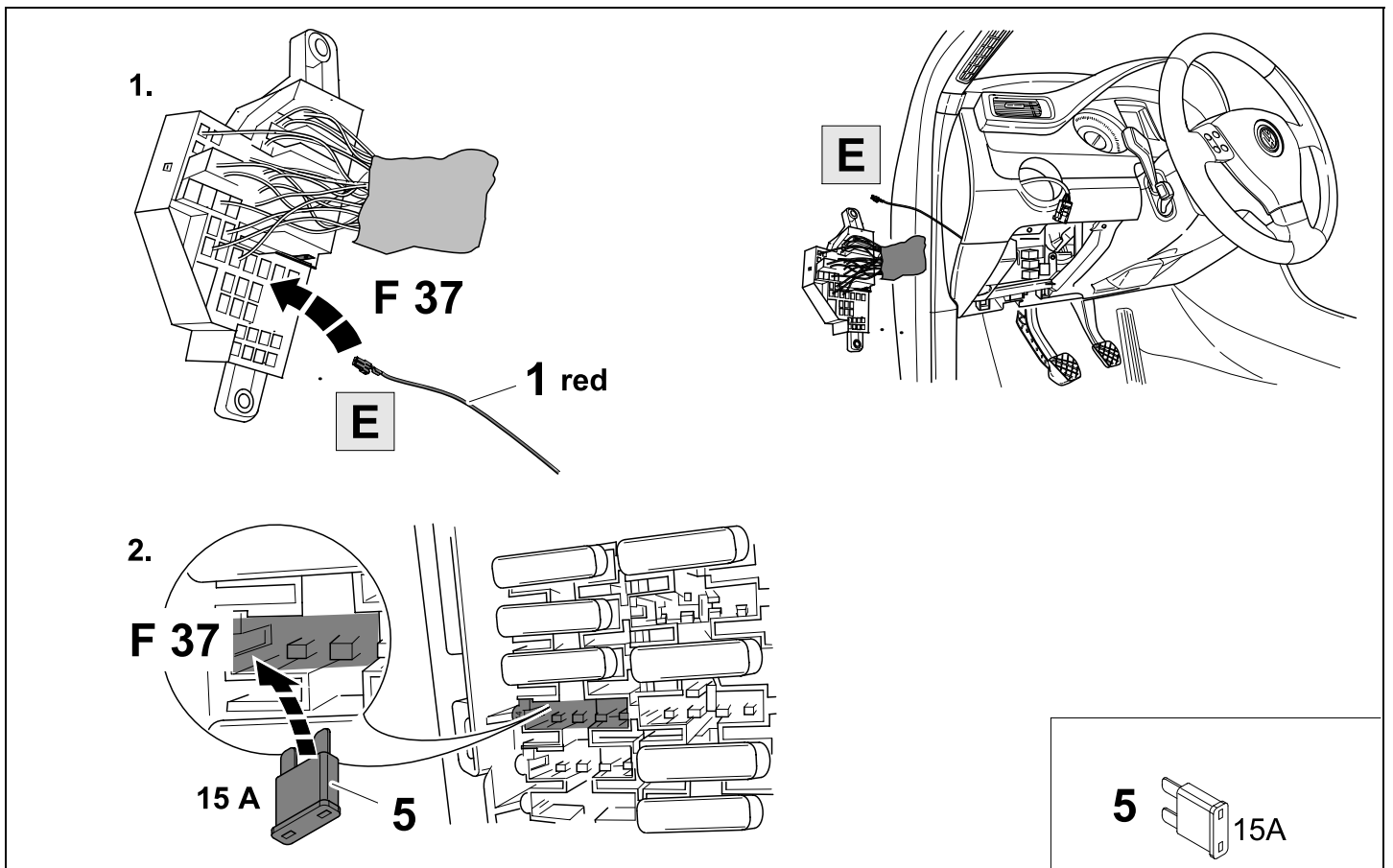
## 10 Connect and fix relay



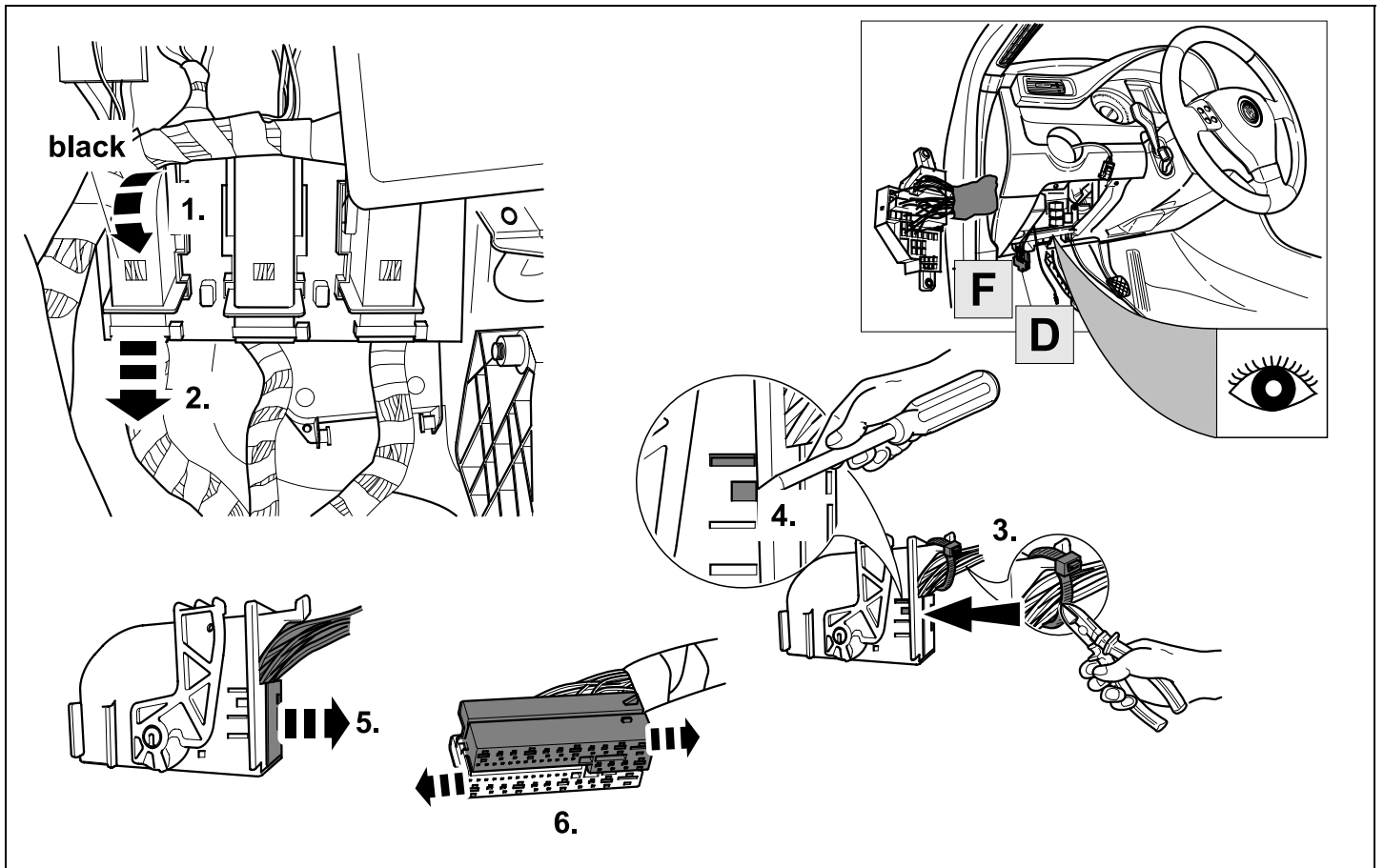
## 11 Contact to light switch connector



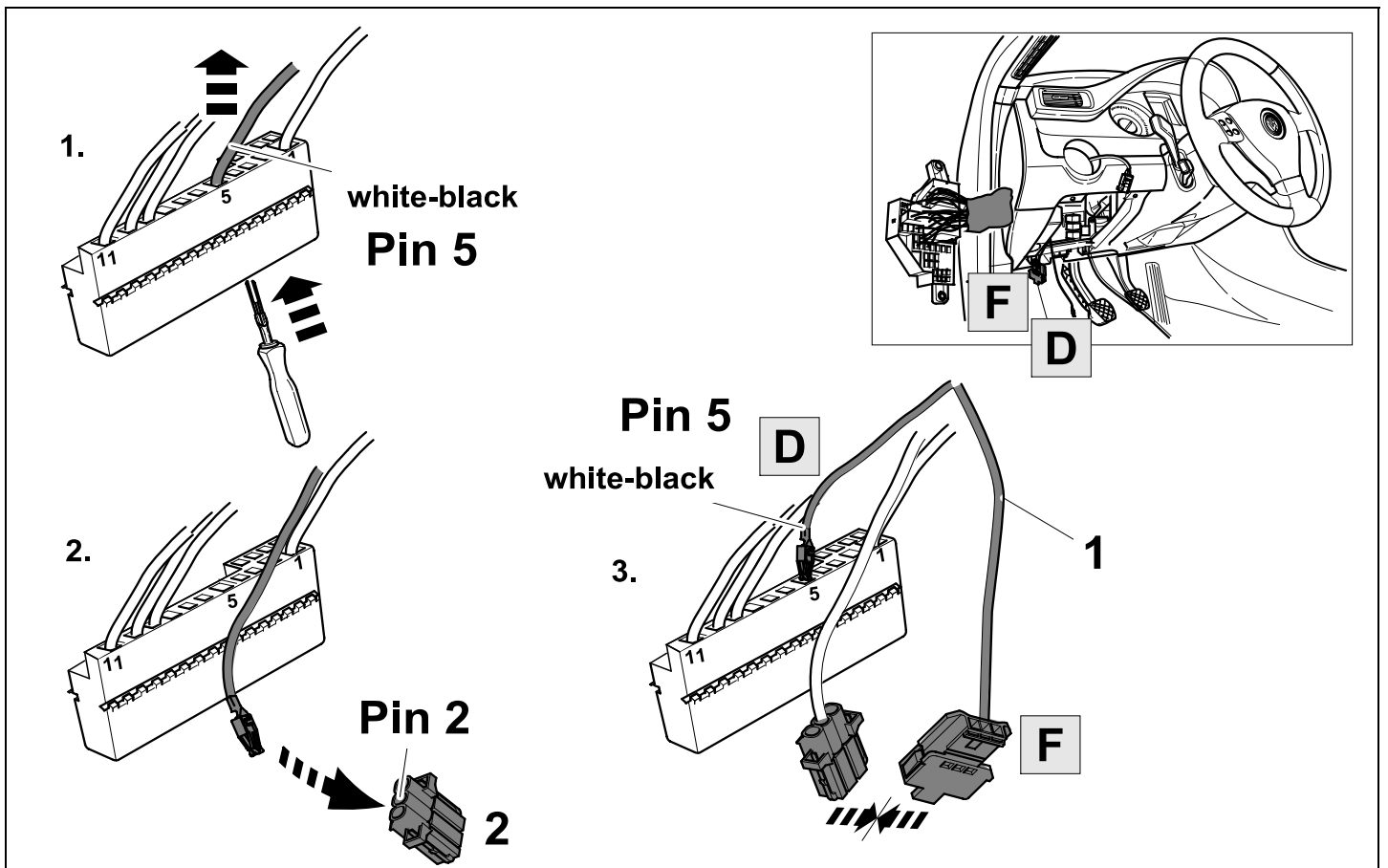
## 12 Fuse box adaption



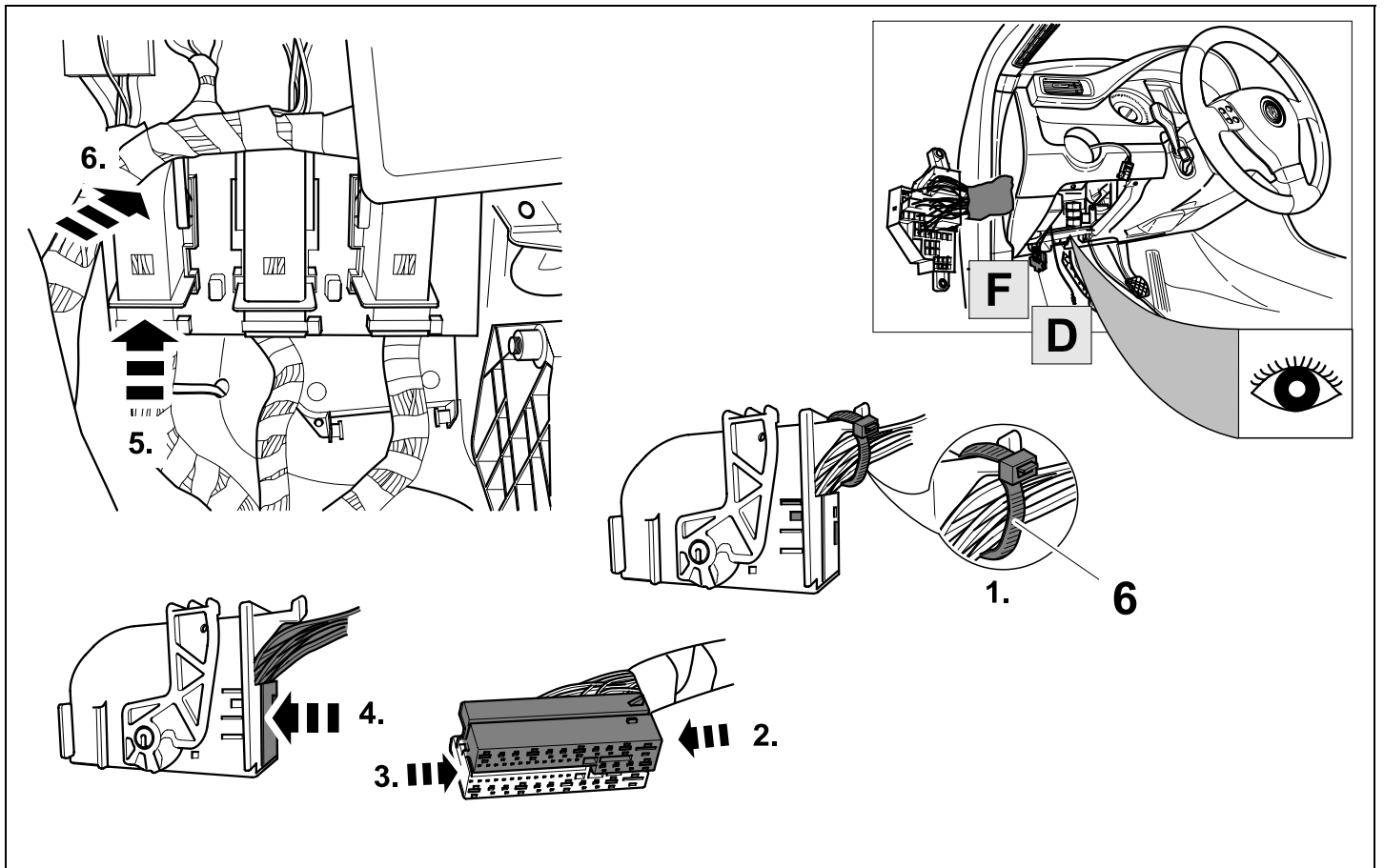
## 13 BCM adaption



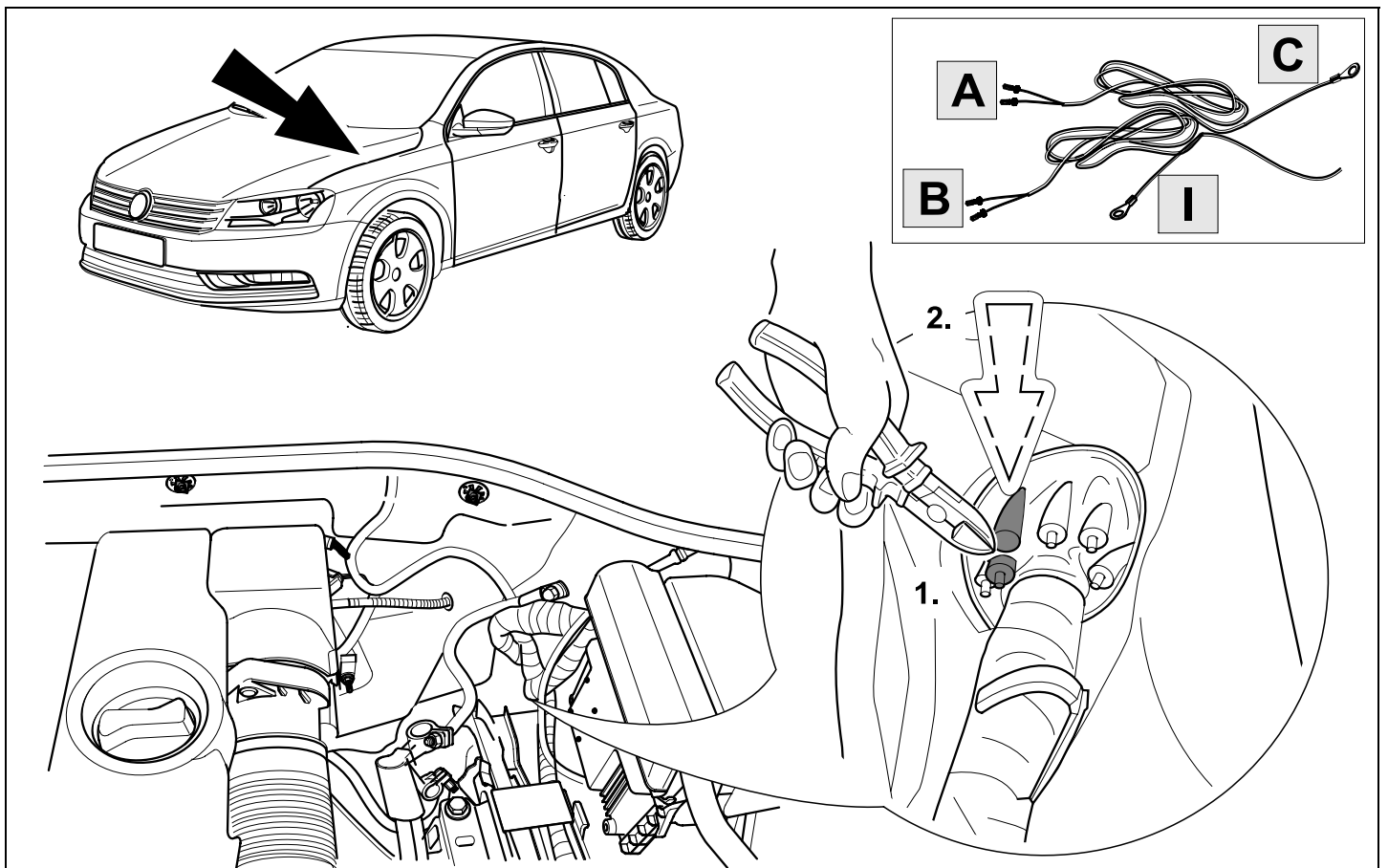
## 14 BCM adaption



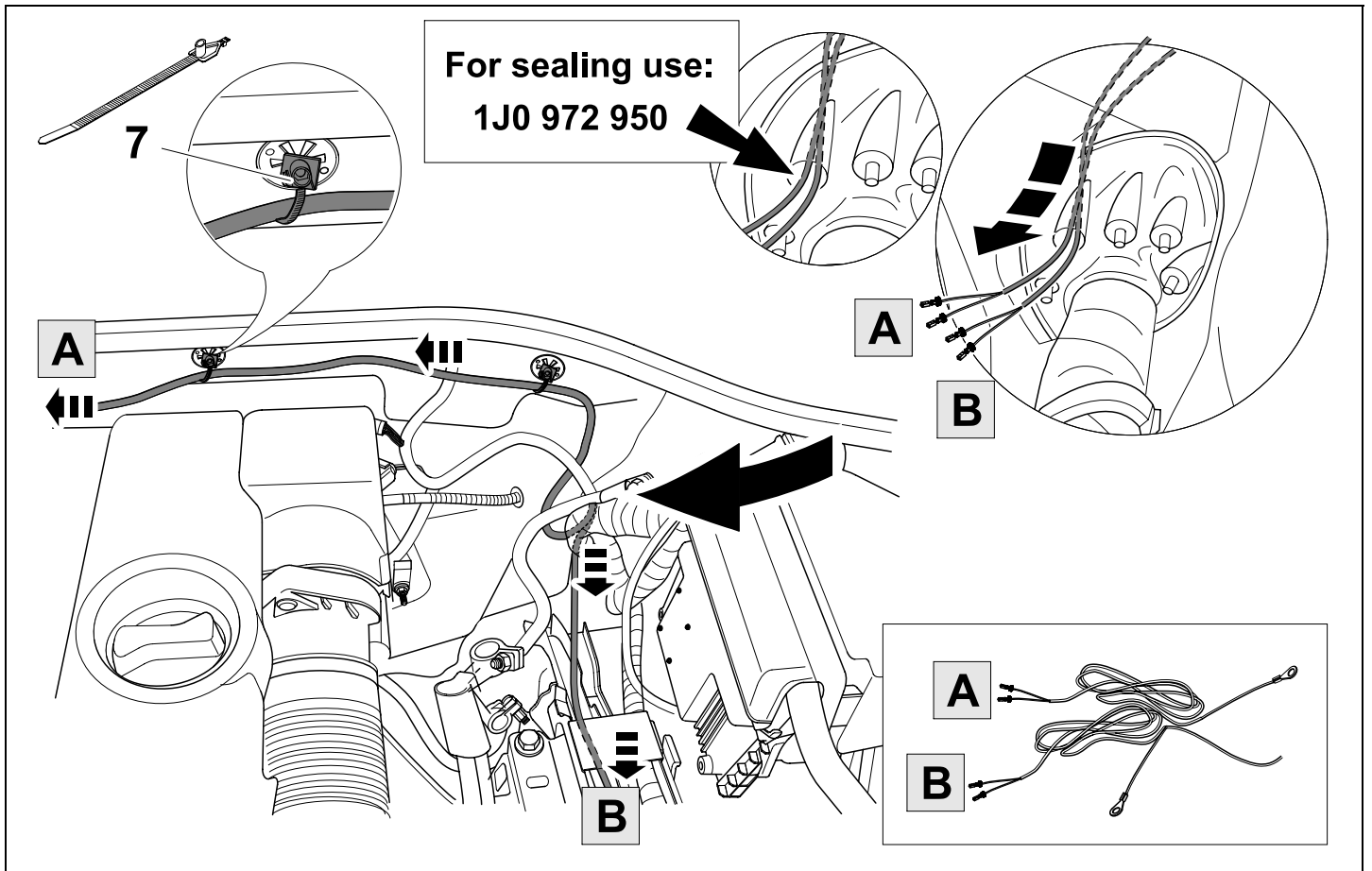
## 15 BCM adaption



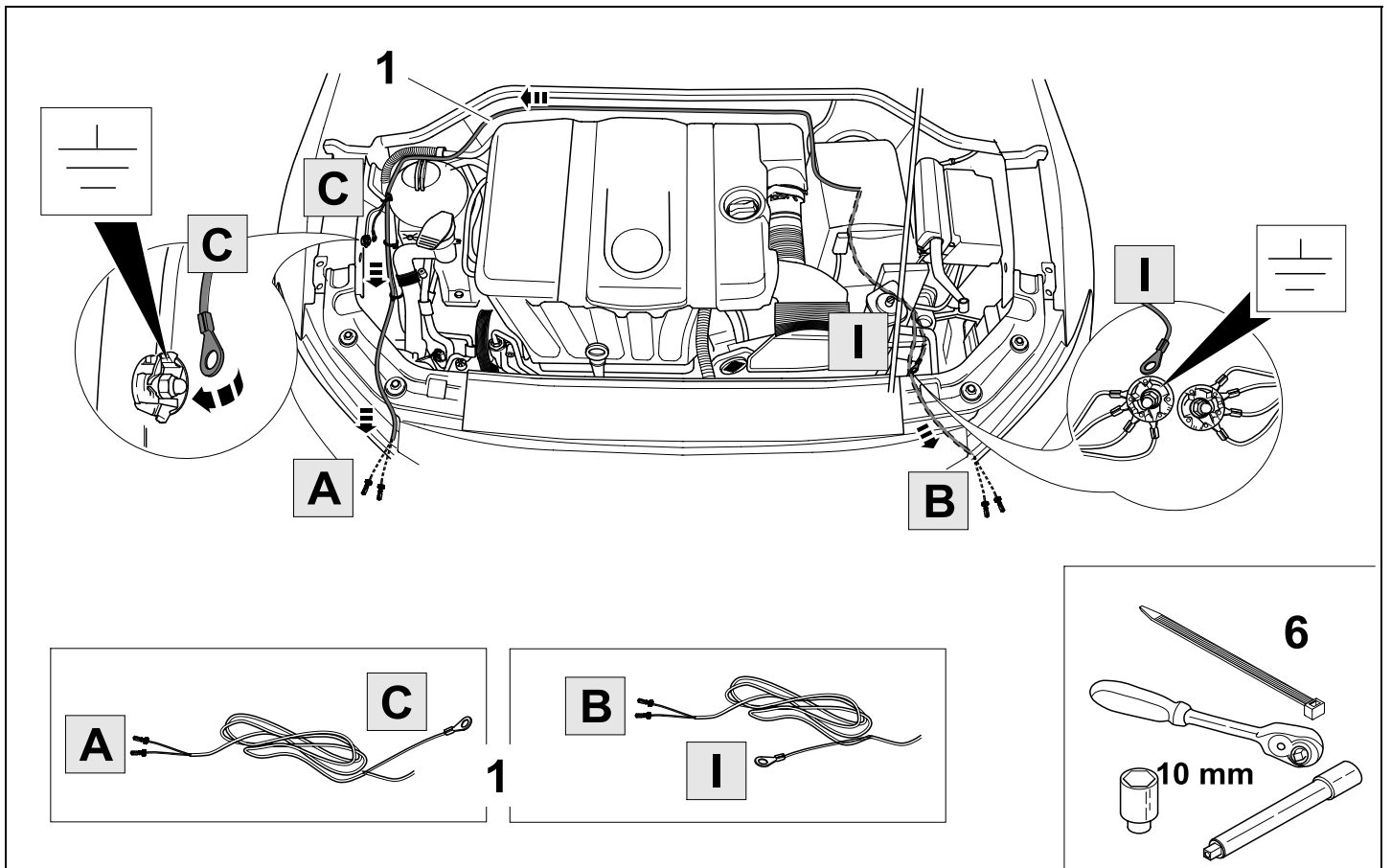
## 16 Break-through to engine compartment



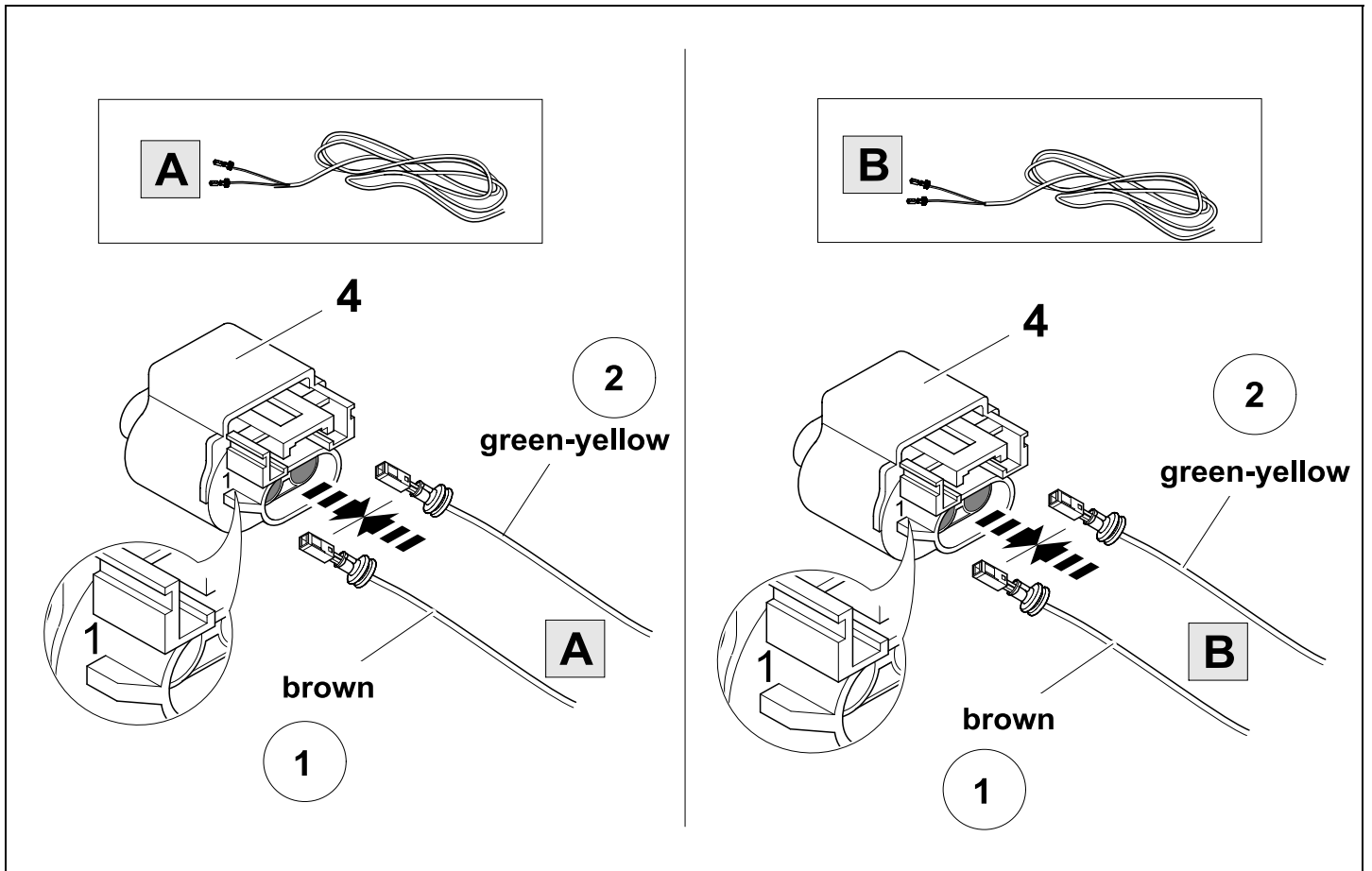
## 17 Wire routing engine compartment



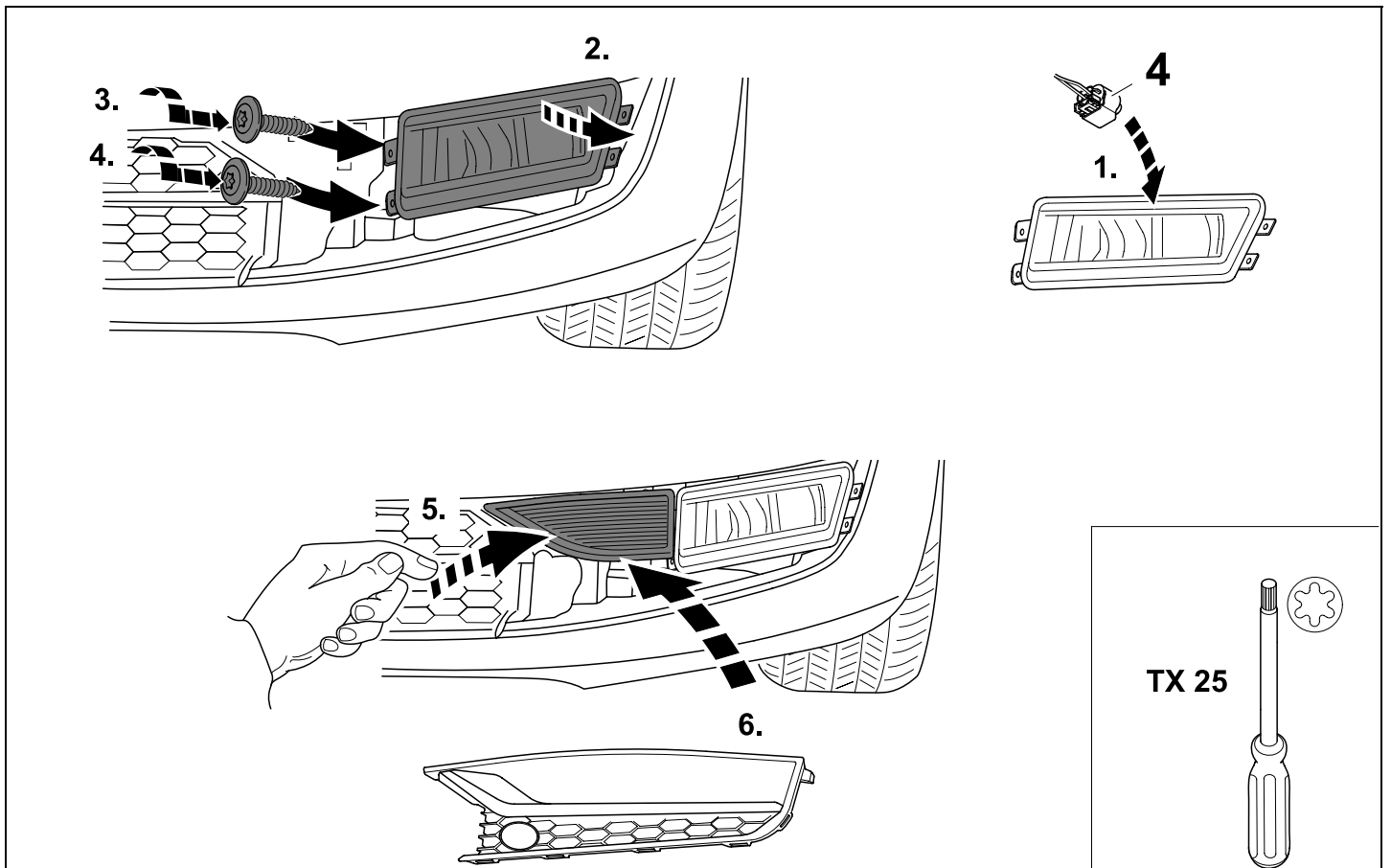
## 18 Wire routing engine compartment



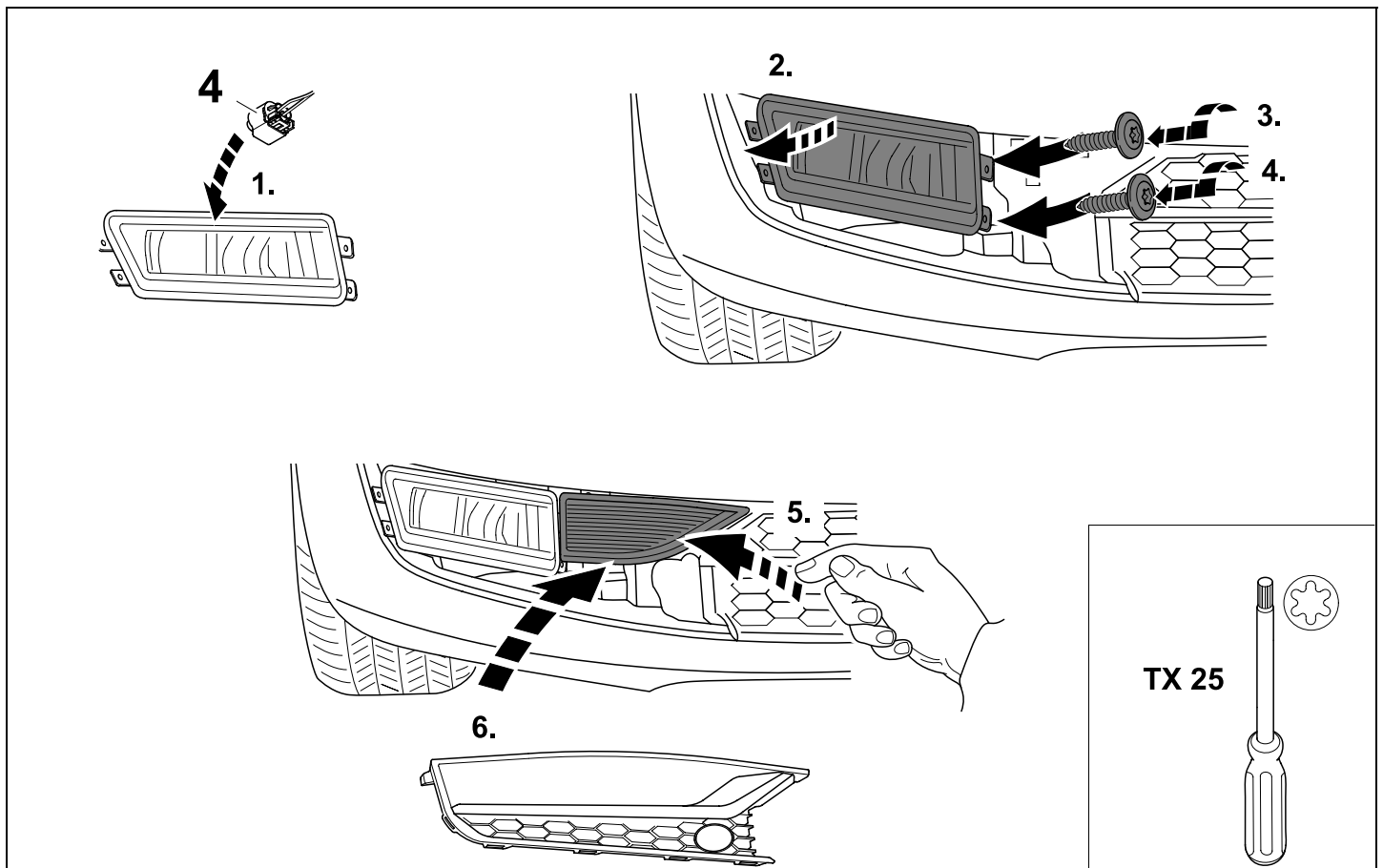
## 19 Connect fog lamp plugs



## 20 Left fog lamp installation



## 21 Right fog lamp installation



### NOTE !

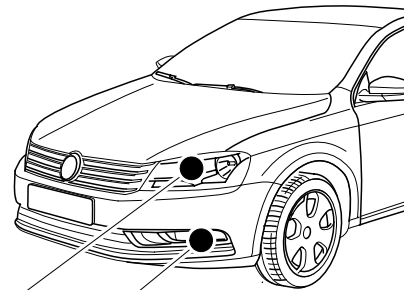
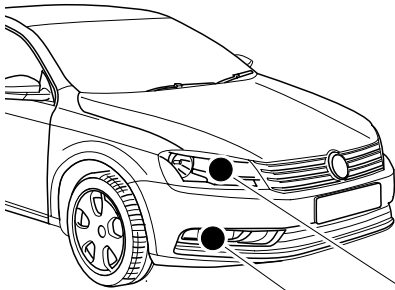
- The reassembling of the vehicle should be done in reverse order
- Electric cables should be passed and fixed along existing cables and fixing points. Improper passed and fixed cables can cause short circuits and may lead to fire of the vehicle
- These fitting instructions should be handed over to the vehicle's owner and all subsequent vehicle's owners
- If the radio code is needed, ascertain by using ELSA
- After reconnection of the battery it is possible that the indicator lamp for ESP is active. In this case the steering angle sensor has to be trained. Refer to ELSA for the correct procedure.
- Clear the vehicle's fault memory after completion of work
- After completion of work adjust the fog lights according ELSA and legal regulations

### Important information

- The fog lights will be out of function when the left high beam filament is damaged

**22** Check all functions

**Switch ignition on and activate fog lights by rotating the light switch knob and pulling it**



**Low Beam on**

**Fog lights on**

**High Beam on = Fog lights off**