

Technical Bulletin



Model(s)	Year	Eng. Code	Trans. Code	VIN Range From	VIN Range To
Jetta, Jetta Wagon	2009	2.0L TDI (CBEA)	All	All	All
Golf, Jetta, Jetta SportWagen, Golf Wagon	2010-2011	2.0L TDI (CJAA)	All	All	All

Parts Description	Part No:	Quantity per repair	Estimated vehicles	Part Ordering Note: at time of release
1. Cold Weather Intercooler Kit	1K0 198 803B	1	600	Normal ordering process

Condition

21 11 06 September 06, 2011 2025464 Supersedes T. B. V211102 dated June 14, 2011 to modify warranty table and labor operations for clarification.

Frozen Charge Air Cooler – Engine Will Not Start

Engine will not start after standing in cold weather below 0°C (32°F), MIL may be illuminated with various induction and/or boost system faults stored in ECM.

Technical Background

Moisture from the intake air condenses and collects in the charge air cooler. At cold temperatures this moisture can freeze causing blockage of the intake air system.

Production Solution

None.

Service

Install revised charge air cooler kit P/N 1K0 198 803B to avoid the formation of this moisture in the boost system.

Procedure

- Lock carrier in service position. See Repair Manual Group 50 in ElsaWeb.
- Separate A/C condenser from charge air cooler.
- Remove radiator and radiator fan assembly.
- Remove the original charge air cooler (item 3 in figure 1) from the vehicle.

Technical Bulletin



Tip:

Charge air hoses can be difficult to remove at the charge air cooler, try separating the hoses from the hot and cold charge air pipes before loosening charge air cooler.

- Remove the lower charge pressure hoses (items 4 and 16 in figure 1) and clean of any moisture or sludge. See Repair Manual Group 21, Turbocharger/G-Charger, Description and Operation, Component Overview, in ElsaWeb.

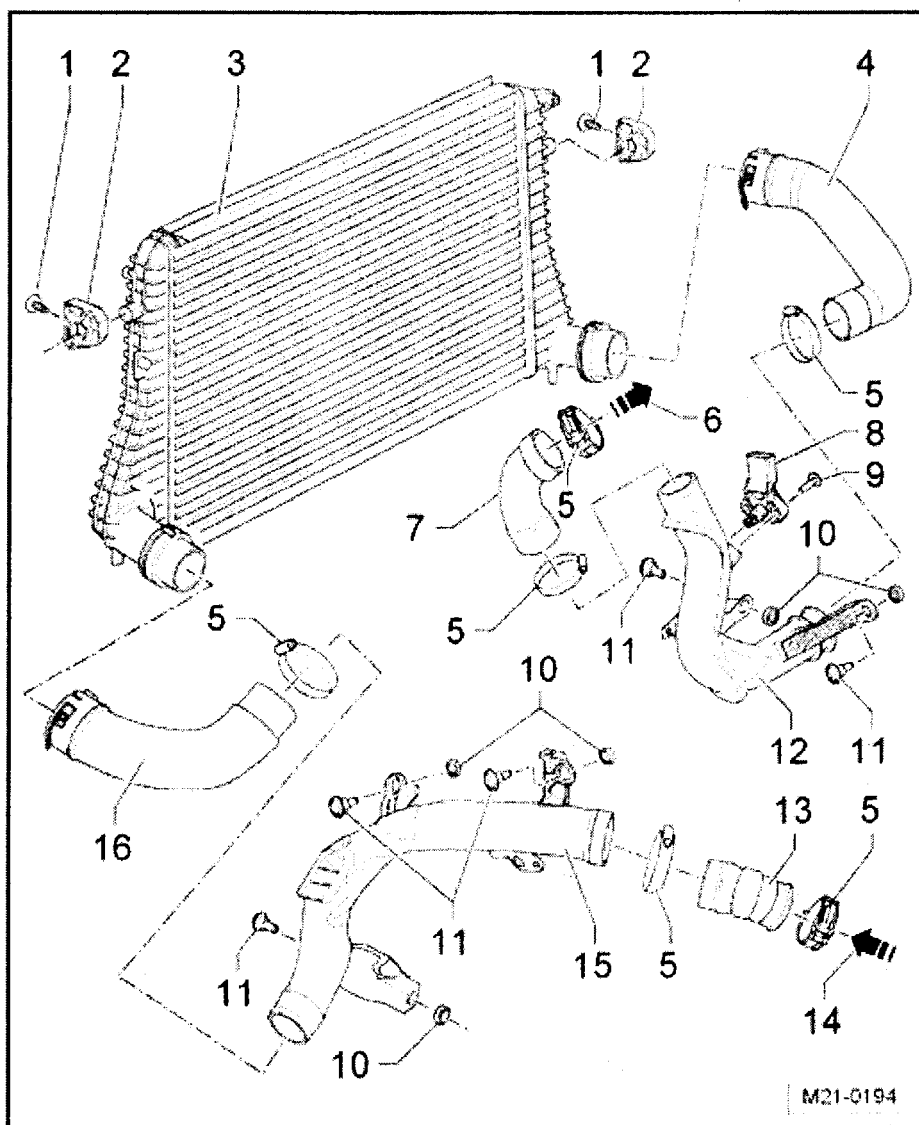


Figure 1

Technical Bulletin



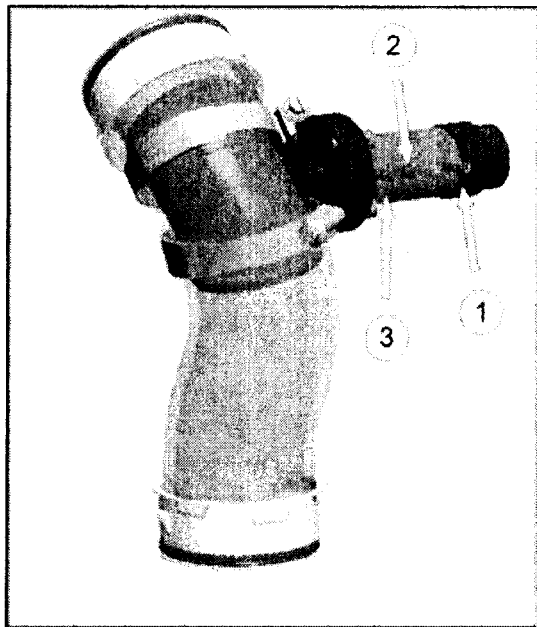
- Remove cold side charge air pipe (item 12 in figure 1) and pressure hose to throttle valve (item 7 in figure 1).
- Separate the A/C condenser from the charge air cooler.
- Remove the radiator and radiator fan assembly.
- Separate the charge air pressure sensor -G31- from cold side charge air pipe.
- Install charge air pressure sensor -G31- from kit to cold side charge air pipe.
- Loosely fit the pressure hose with new temperature switch to the cold side charge air pipe.



Tip:

By loosely installing pressure hose with switch to cold side charge air pipe allows for "wobble room" when reinstalling.

- Install the cold side charge air pipe (item 12 in figure 1) and connect the charge air pressure sensor -G31- electrical connector.



- Note the vacuum hose routing on the temperature switch (figure 2).

1. Ventilation hose to air cleaner
2. Hose to vacuum source
3. Hose to charge air cooler regulator flap

Figure 2

- Route vacuum overlay harness as seen in figures 3 and 4.

Technical Bulletin

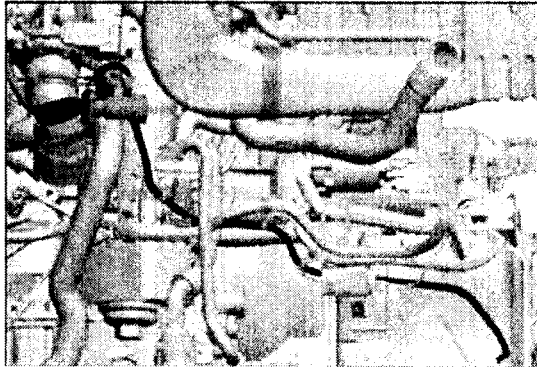


Figure 3

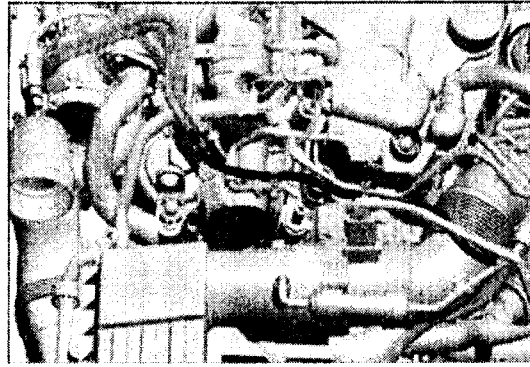


Figure 4

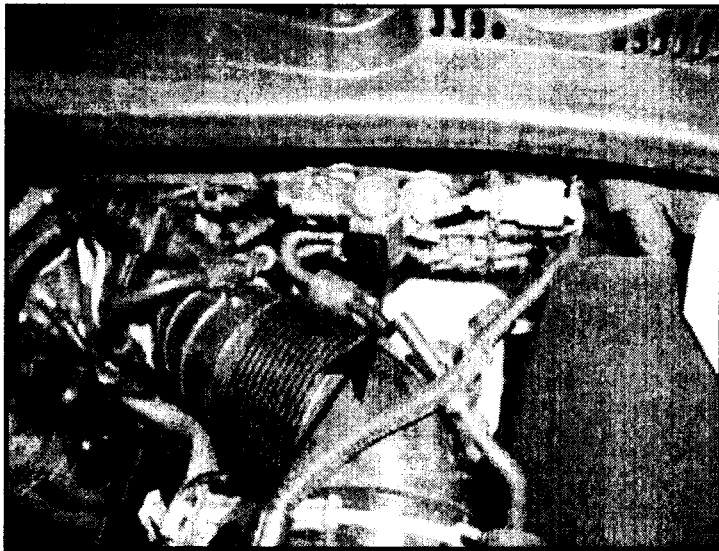


Figure 5

- Cut ventilation hose to air cleaner where indicated in figure 5.

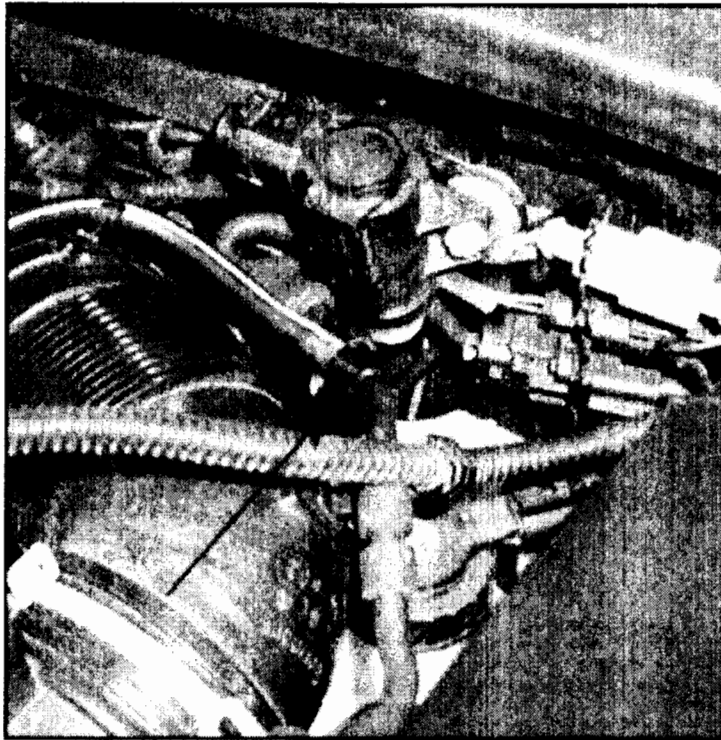


Figure 6

- Install splice as indicated in figure 6.



Tip:

Note the white tracer on the vacuum hose in figure 6.

Technical Bulletin

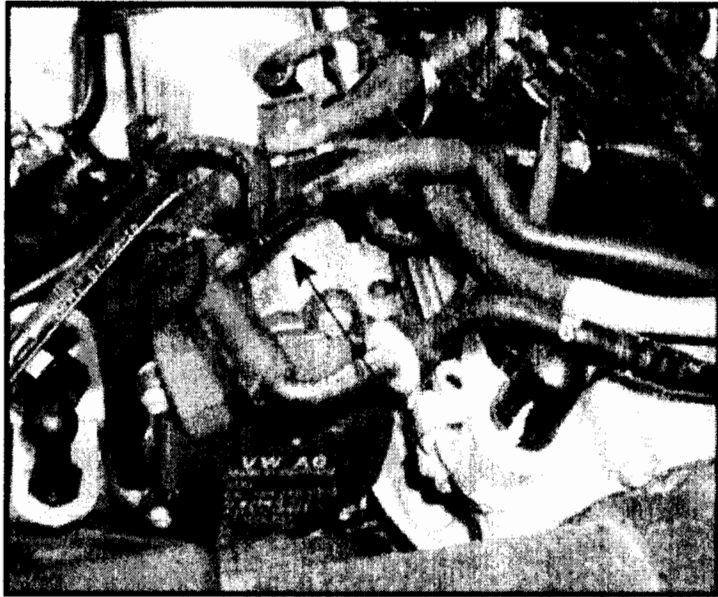


Figure 7

- Cut vacuum source hose where indicated in figure 7, and install splice.
- Install the revised charge air cooler (item 3 in figure 1) with regulating flap and connect the regulating flap vacuum hose.
- Re-assemble all charge air pipe connections.
- Connect A/C condenser to charge air cooler using fasteners from kit, and install radiator with fan assembly.
- Reassemble front carrier.
- Re-aim headlights.

Technical Bulletin



Warranty

Please verify engine code for accurate warranty table selection.

To determine if this procedure is covered under Warranty, always refer to the Warranty Policies and Procedures Manual ¹⁾					
Model(s)	Year(s)	Eng. Code(s)	Trans. Code(s)	VIN Range From	VIN Range To
Jetta, Jetta Wagon	2009	2.0L TDI (CBEA)	All	All	All
Claim Type:			Use applicable Claim Type ¹⁾		
SAGA Coding					
Service Number:	Damage Code	HST	Damage Location (Depends on Service No.)	Parts Manufacturer (removed part)	
2143	0055	-	Use applicable when indicated in ElsaWeb (L/R)	3ME	
Labor Operation ³⁾ : Replace Charge Air Cooler			21431983 = 20 TU		
Labor Operation ³⁾ : Remove and Install Radiator			19701950 = 70 TU		
Labor Operation ³⁾ : Lock Carrier Service Position			50380950 = 40 TU		
Labor Operation ³⁾ : Remove and Install Front Bumper Cover			63291900 = 70 TU 63291910 = 90 TU (Cup Edition Only)		
Labor Operation ³⁾ : Install Cold Weather Intercooler Kit			21433199 = 30 TU max. A-time		
Labor Operation ³⁾ : Aim head lights			941516XX = see ElsaWeb		
Diagnostic Time ⁴⁾					
GFF Time expenditure	01500000 = 10 TU max.			YES	
Road Test	01210002 01210004			NO	

Technical Bulletin



Technical Diagnosis	0132xxxx = XX TU max.	NO
Claim Comment: Input "As per Technical Bulletin 2025464" in comment section of Warranty Claim.		
<p>1) Vehicle may be outside any Warranty in which case this Technical Bulletin is informational only</p> <p>2) Code per warranty vendor code policy.</p> <p>3) Labor Time Units (TUs) are subject to change with Elsa updates.</p> <p>4) Documentation required per Warranty Policy Procedures Manual.</p>		

Please verify engine code for accurate warranty table selection.

To determine if this procedure is covered under Warranty, always refer to the Warranty Policies and Procedures Manual ¹⁾					
Model(s)	Year(s)	Eng. Code(s)	Trans. Code(s)	VIN Range From	VIN Range To
Golf, Jetta Jetta SportWagen, Golf Wagon	2010-2011	2.0L TDI (CJAA)	All	All	All
Claim Type:			Use applicable Claim Type ¹⁾		
SAGA Coding					
Service Number:	Damage Code	HST	Damage Location (Depends on Service No.)	Parts Manufacturer (removed part)	
2143	0055	-	Use applicable when indicated in ElsaWeb (L/R)	WWO - Golf 3ME - Jetta, Jetta SportWagen, Golf Wagon	
Labor Operation ³⁾ : Replace Charge Air Cooler (includes radiator R&I, drain & fill)			21431983 = 130 TU		
Labor Operation ³⁾ : Lock Carrier Service Position			50380950 = 50 TU – Jetta/Jetta SportWagen/Golf Wagon 50380950 = 70 TU - Golf		

Technical Bulletin



Labor Operation ³⁾ : Remove and Install Front Bumper Cover		63291950 = 40 TU
Labor Operation ³⁾ : Remove and Install Radiator Grille		66051900 = 20 TU
Labor Operation ³⁾ : Install Cold Weather Intercooler Kit		21433199 = 30 TU max. A-time
Labor Operation ³⁾ : Aim head lights		941516XX = see ElsaWeb
Diagnostic Time ⁴⁾		
GFF Time expenditure	01500000 = 10 TU max.	YES
Road Test	01210002 01210004	NO
Technical Diagnosis	0132xxxx = XX TU max.	NO
Claim Comment: Input "As per Technical Bulletin 2025464" in comment section of Warranty Claim.		
<p>¹⁾ Vehicle may be outside any Warranty in which case this Technical Bulletin is informational only</p> <p>²⁾ Code per warranty vendor code policy.</p> <p>³⁾ Labor Time Units (TUs) are subject to change with Elsa updates.</p> <p>⁴⁾ Documentation required per Warranty Policy Procedures Manual.</p>		

Required Parts and Tools

Part Description	Part No:	Quantity
Cold Weather Intercooler Kit	1K0 198 803B	1

No Special Tools required.

Additional Information

All part and service references provided in this Technical Bulletin are subject to change and/or removal. Always check with your Parts Dept. and Repair Manuals for the latest information.