

## IMPORTANT INFORMATION

Please inform and provide a copy of this document to every person in your dealership with campaign-related responsibilities, including Service, Parts and Accounting personnel. By law, dealers must correct, prior to delivery for sale or lease, any vehicle that fails to comply with an applicable Federal Motor Vehicle Safety Standard or that contains a defect relating to motor vehicle safety. **If you have questions regarding this or any other campaign, please call (800) 741-2919.**



# Emissions Recall Circular

Code: **M6**

Subject: **2004–2005 MY Golf, Jetta and New Beetle with TDI Engines**  
**Replace EGR Cooler**

**REVISED** September 2006

### Problem Description

The EGR cooler on affected vehicles has the potential to develop an internal leak. If this happens, the MIL light may come on, and the vehicle may exceed Federal and/or California emissions standards.

### Corrective Action

Replace the EGR cooler.

### VIN Range of Affected Vehicles

#### U.S.A.

##### 2004 Golf

9BW\_R\_1J\_44005097 – 9BW\_R\_1J\_44045059

##### 2004-2005 Jetta

3VW\_R\_9M\_4M022735 – 3VW\_R\_9M\_5M014377  
WVW\_R\_1J\_4W003377 – WVW\_R\_1J\_5W000433

##### 2004-2005 New Beetle

3VW\_R\_1C\_4M405246 – 3VW\_R\_1C\_5M400997

#### CANADA

##### 2004 Golf

9BW\_R\_1J\_44003688 – 9BW\_R\_1J\_44045027

##### 2004-2005 Jetta

3VW\_R\_9M\_4M015080 – 3VW\_R\_9M\_5M014425  
WVW\_R\_1J\_4W003375 – WVW\_R\_1J\_5W003992

##### 2004 New Beetle

3VW\_R\_1C\_4M403023 – 3VW\_R\_1C\_4M422000

### Allocation Report of Affected Vehicles

In the Service Manager's Package, dealers with affected vehicles will receive a report containing the complete VIN, customer name and address data. Dealers will not receive a report if they have no affected vehicles.

*NOTE: The allocation report contains owner names and addresses obtained from Motor Vehicle Registration Records. By law, this data may only be used for recall purposes. Use for any other reason may be a violation of law in many states/provinces. Accordingly, you are urged to limit the use of this report.*

### Parts Information and Allocation

On or about August 18, 2006 you will receive an initial allocation of parts. As parts are not blocked, please do not order additional parts until you receive your initial allocation. Thereafter, additional parts can be ordered through your facing PDC.

### Owner Notification Mailing

On or about August 18, 2006 Volkswagen will notify all known owners of affected vehicles by first class mail. A sample copy of the owner letter is enclosed.

### Emissions Recall Requirements (California ONLY)

The California Air Resources Board and the Department of Motor Vehicles (DMV) require emissions-related recalls to be completed prior to vehicle registration renewal. **When recall work is done you must provide the owner with a signed "Vehicle Emission Recall – Proof of Correction" certificate (RC EMIS\_CAL VW).** A supply of these certificates will be enclosed with your allocation list for this campaign. Additional certificates can be ordered at no cost from Resolve at 1-800-544-8021.

*NOTE: Ensure owners are aware of the importance of retaining the completed certificate for their records. It should be mailed to the California DMV only upon request.*

### Emissions Recall Vehicle Labeling Guidelines (California ONLY)

Vehicles repaired under emission recalls in the state of California are required by the California Air Resources Board (CARB) to be identified with an emission recall completion label when the recall is performed. It is mandatory for all dealers in the state of California to complete and affix an emission recall completion label (part number **ZVW 010 000**) whenever an emissions recall is performed. Labels can be ordered at no cost from Resolve at 1-800-544-8021.

**Claim Entry Procedure**

Immediately upon completion of the repair work, enter the correct code listed below. Claims will only be paid for vehicles that show this campaign open in ELSAWeb on the day of the repair. To help ensure prompt and proper payment, attach the screen print to the repair order.

Damage Code	Time Units	Work Scope
M6 12	380 T.U.	<b><u>Golf and Jetta Vehicles</u></b>
		- Replace EGR cooler
		1 038 198 512 Kit 0.06L G 012 A8F A4 Coolant
M6 13	415 T.U.	<b><u>New Beetle</u></b>
		- Replace EGR cooler
		1 038 198 512 Kit 0.06L G 012 A8F A4 Coolant
M6 20	0 T.U.	- Customer refused repairs
<i>There is NO reimbursement for Vehicle Wash</i>		
<i>The system will enter labor &amp; parts applicable to the codes above</i>		
<b>LOANER</b>		<b>SUB PARTS</b>
<i>One-day Loaner @ \$25/day (US)</i>		<i>Not applicable</i>
<i>One-day Loaner @ \$30/day (CAN)</i>		

## Customer Letter Example (All United States EXCEPT California)

August 2006

**Subject: Emissions Recall M6  
2004-2005 Model Year Volkswagen Golf, Jetta and New Beetle Vehicles with TDI Engines  
Replace EGR Cooler**

Dear Volkswagen Owner:

We are writing to inform you of an emissions recall on some 2004-2005 model year Volkswagen Golf, Jetta and New Beetle TDI engine vehicles. Our records show that you are the owner of one of these vehicles.

### **What Is The Problem?**

The EGR cooler on affected vehicles has the potential to develop an internal leak. If this happens, the MIL light may come on, and the vehicle may exceed Federal and/or California emissions standards.

### **What Will Volkswagen Do?**

Replace the EGR cooler.

### **What We Would Like You To Do**

Please contact your authorized Volkswagen dealer and arrange for an appointment without delay. This service will take about four hours and will be free of charge. Please keep in mind that your dealer may need additional time for the preparation of the repair, as well as to accommodate their daily workshop schedule.

### **Lease Vehicles**

If you are the lessor and registered owner of the vehicle identified in this action, please forward this information immediately via first-class mail to the lessee within ten (10) days of receipt of this notification.

### **Have You Changed Your Address Or Sold The Vehicle?**

If you have, please fill out the enclosed prepaid Owner Reply card and mail it to us so we can update our records.

### **Reimbursement of Expenses**

If you have previously paid for replacement of the EGR cooler, the enclosed form explains how to request reimbursement. We would be pleased to review your reimbursement request.

### **Service Help from Us**

If your authorized Volkswagen dealer fails or is unable to complete this work free of charge within a reasonable time, please call or write to:

*Volkswagen of America Inc.  
Attn: Customer CARE Center – Hills East (M6)  
3499 West Hamlin Road  
Rochester Hills, MI 48309  
1-800-893-5298*

We apologize for any inconvenience this matter may cause; however we are taking this action to help ensure your continued satisfaction with your vehicle. Thank you for driving a Volkswagen!

Sincerely,

Volkswagen Product Compliance

## Customer Letter Example (California ONLY)

August 2006

**Subject: Emissions Recall M6  
2004-2005 Model Year Volkswagen Golf, Jetta and New Beetle Vehicles with TDI Engines  
Replace EGR Cooler**

Dear Volkswagen Owner:

We are writing to inform you of an emissions recall on some 2004-2005 model year Volkswagen Golf, Jetta and New Beetle TDI engine vehicles. Our records show that you are the owner of one of these vehicles.

### What Is The Problem?

The EGR cooler on affected vehicles has the potential to develop an internal leak. If this happens, the MIL light may come on, and the vehicle may exceed Federal and/or California emissions standards.

### What Will Volkswagen Do?

Replace the EGR cooler.

### What We Would Like You To Do

Please contact your authorized Volkswagen dealer and arrange for an appointment without delay. This service will take about four hours and will be free of charge. Please keep in mind that your dealer may need additional time for the preparation of the repair, as well as to accommodate their daily workshop schedule.

## IMPORTANT INFORMATION FOR CALIFORNIA VEHICLE OWNERS

### California Regulations

California regulations require that this repair be completed prior to the time that you renew your vehicle registration. Therefore, **please make sure that this repair is completed prior to the renewal of your vehicle registration**, and that you furnish proof of repair to the Department of Motor Vehicles (DMV) in the form of a copy of the dealer's repair order, including a signed "Emissions Campaign Performance Authorization" certification form. You obtain this form from your dealer after the repair has been completed. Please retain the signed certification form with your vehicle records. **DO NOT MAIL THIS FORM to the DMV, unless requested.**

### Lease Vehicles

If you are the lessor and registered owner of the vehicle identified in this action, please forward this information immediately via first-class mail to the lessee within ten (10) days of receipt of this notification.

### Have You Changed Your Address Or Sold The Vehicle?

If you have, please fill out the enclosed prepaid Owner Reply card and mail it to us so we can update our records.

### Reimbursement of Expenses

If you have previously paid for replacement of the EGR cooler, the enclosed form explains how to request reimbursement. We would be pleased to review your reimbursement request.

### Service Help from Us

If your authorized Volkswagen dealer fails or is unable to complete this work free of charge within a reasonable time, please call or write to:

*Volkswagen of America Inc.  
Attn: Customer CARE Center – Hills East (M6)  
3499 West Hamlin Road  
Rochester Hills, MI 48309  
1-800-893-5298*

We apologize for any inconvenience this matter may cause; however we are taking this action to help ensure your continued satisfaction with your vehicle. Thank you for driving a Volkswagen!

Sincerely,

Volkswagen Product Compliance

## Customer Letter Example (CANADA)

August 2006

**Subject: Emissions Recall M6  
2004-2005 Model Year Volkswagen Golf, Jetta and New Beetle Vehicles with TDI Engines  
Replace EGR Cooler**

Dear Volkswagen Owner:

We are writing to inform you of an emissions recall on some 2004-2005 model year Volkswagen Golf, Jetta and New Beetle TDI engine vehicles. Our records show that you are the owner of one of these vehicles.

### **What Is The Problem?**

The EGR cooler on affected vehicles has the potential to develop an internal leak. If this happens, the MIL light may come on, and the vehicle may exceed Federal emissions standards.

### **What Will Volkswagen Do?**

Replace the EGR cooler.

### **What We Would Like You To Do**

Please contact your authorized Volkswagen dealer and arrange for an appointment without delay. This service will take about four hours and will be free of charge. Please keep in mind that your dealer may need additional time for the preparation of the repair, as well as to accommodate their daily workshop schedule.

### **Lease Vehicles**

If you are the lessor and registered owner of the vehicle identified in this action, please forward this information immediately via first-class mail to the lessee within ten (10) days of receipt of this notification.

### **Have You Changed Your Address Or Sold The Vehicle?**

If you have, please fill out the enclosed prepaid Owner Reply card and mail it to us so we can update our records.

### **Reimbursement of Expenses**

If you have previously paid for replacement of the EGR cooler, the enclosed form explains how to request reimbursement. We would be pleased to review your reimbursement request.

### **Service Help from Us**

If your authorized Volkswagen dealer fails or is unable to complete this work free of charge within a reasonable time, please call or write to:

*Volkswagen Canada Inc.  
Attn: Customer CARE Center – Hills East (M6)  
P.O. Box 842, Stn.A  
Windsor, ON N9A 9Z9  
CANADA  
1-800-893-5298*

We apologize for any inconvenience this matter may cause; however we are taking this action to help ensure your continued satisfaction with your vehicle. Thank you for driving a Volkswagen!

Sincerely,

Volkswagen Product Compliance












## Parts:

<u>Quantity</u>	<u>Part Number</u>	<u>Part Name</u>
1	038 198 512	Kit
0.06L	G 012 A8F A4	Coolant

### Part kit 038 198 512 contains the following parts:

<u>Quantity</u>	<u>Part Number</u>	<u>Part Name</u>
1	038 131 512 J	EGR cooler
3	069 131 547 D	Gasket
1	038 131 547 A	Gasket (metal)
1	038 131 521 CC	Connecting Pipe
2	N 902 002 01	Nut

## Special Tools:

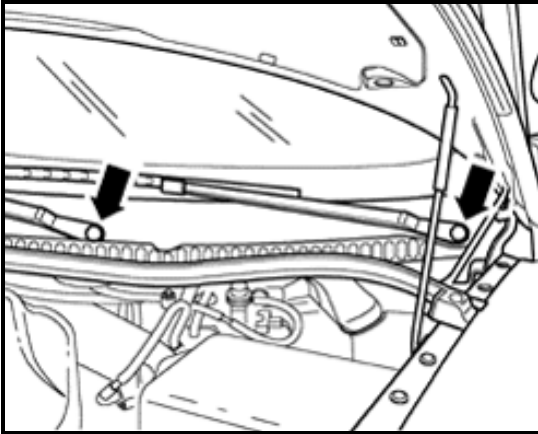
<p>V.A.G 1331</p>  <p>V.A.G 1332</p> 	<p>VAS 6340</p> 	<p>⇐ V.A.G 1331/1332 Torque wrenches or equivalent</p> <p>⇐ VAS 6340 Hose clip pliers</p>
<p>V.A.G 1921</p> 	<p>V.A.G 1274/8</p> 	<p>⇐ V.A.G 1921 Spring clamp pliers</p> <p>⇐ V.A.G 1274/8 Adapter</p>
 <p>3093</p> 	 <p>3094</p> 	<p>⇐ 3093 Hose clamps or equivalent</p> <p>⇐ 3094 Hose clamps or equivalent</p>
 <p>VAS 6208</p>	 <p>VAS 6096</p>	<p>⇐ VAS 6208 Coolant drain pan or equivalent</p> <p>⇐ VAS 6096 Cooling system charge unit</p>

## Work Sequence

### For All Vehicles

- Open hood and remove engine cover and foam sound deadener below it
- Remove clamps and flexible air intake hose between air cleaner and air intake pipe

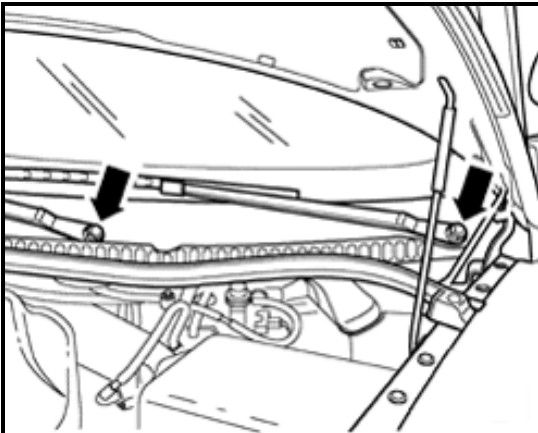
1



### For New Beetle Vehicles Only

- ⇐ Ensure wiper arms are in park position and remove black cover caps -arrows-

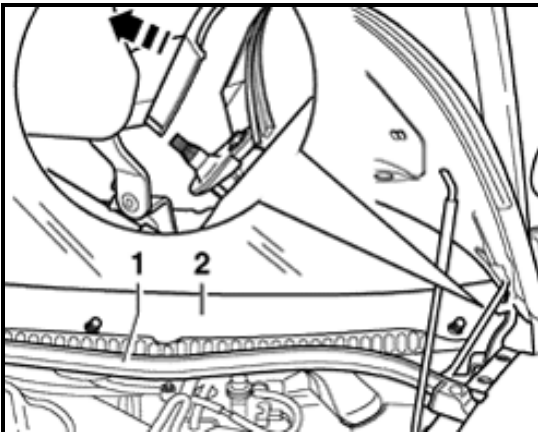
2



- ⇐ Loosen nuts -arrows- but do not completely remove

- Move wiper arms back and forth on shafts until they release from shafts
- Remove nuts and wiper arms

3

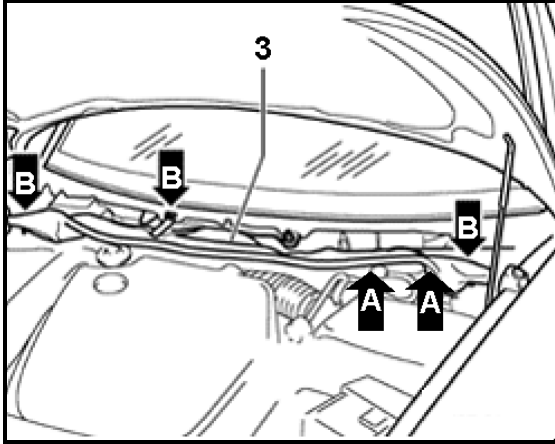


- Remove plenum panel seal -1-
- ⇐ Carefully pry cowl panel -2- off

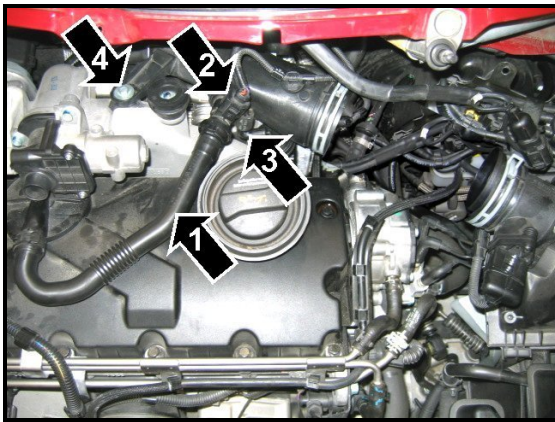
**Note:** The cowl panel is attached to a window guide underneath the windshield



4

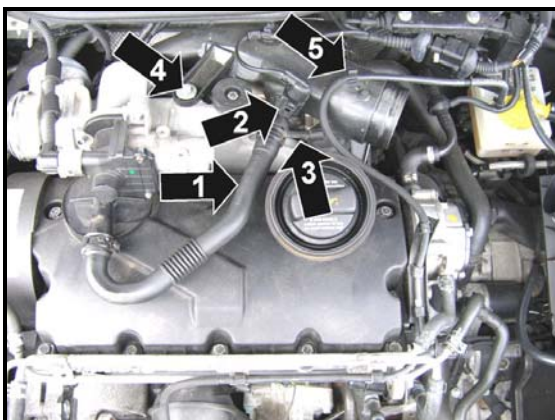


- ⇐ Remove 2 nuts -A- securing solenoid valves to plenum panel
- Remove vacuum hoses from retainers on underside of plenum panel
- ⇐ Remove bolts -B-, pull plenum panel -3- forward and remove



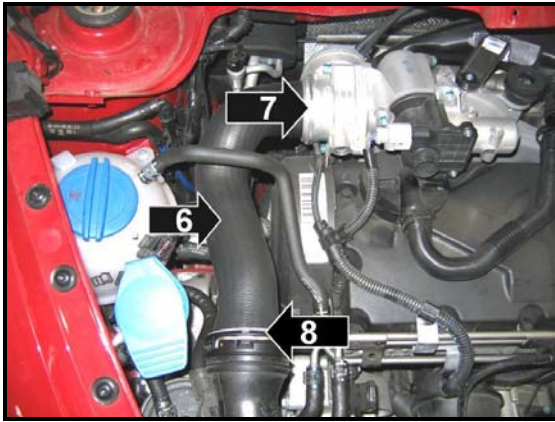
- ⇐ Disconnect connector -2- from crankcase air valve and remove harness from clip on air intake pipe
- ⇐ Disconnect air hose -1- from PCV valve and move aside
- ⇐ Disconnect vacuum hose -3- from EGR cooler, remove from clip on air intake pipe and move aside
- ⇐ Remove bolt -4- securing air intake pipe to intake manifold

### For Golf and Jetta Vehicles Only




- ⇐ Disconnect connector -2- from crankcase air valve and remove harness from clip on air intake pipe
- ⇐ Disconnect air hose -1- from PCV valve and move aside
- ⇐ Disconnect vacuum hose -3- from EGR cooler, remove from clip on air intake pipe and move aside
- ⇐ Remove bolt -4- securing air intake pipe to intake manifold
- ⇐ Unclip vacuum hose -5- from air intake pipe and move aside

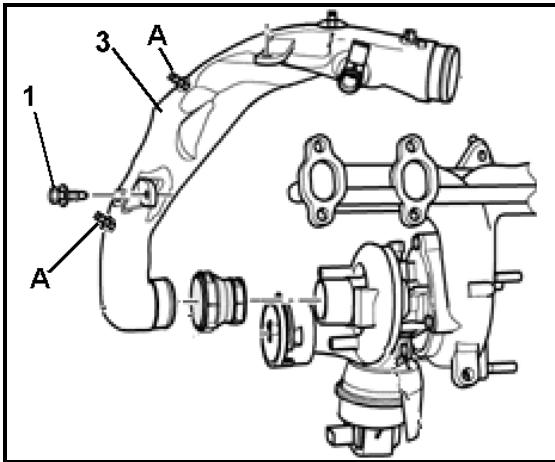




**For All Vehicles**

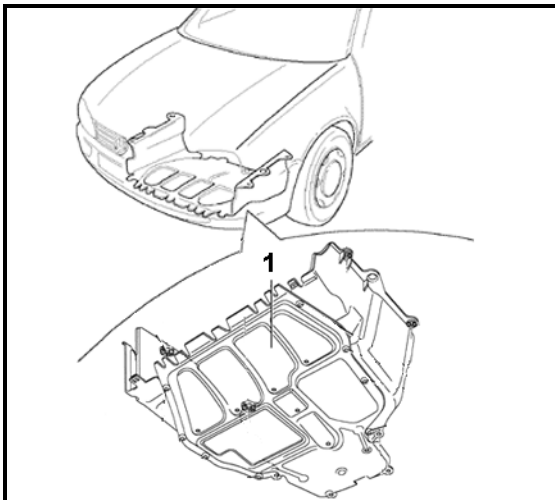
⇐ Remove clips -7- and -8- and charge air hose -6-

 Tip: On some models, clip -8- shown in illustration may be different

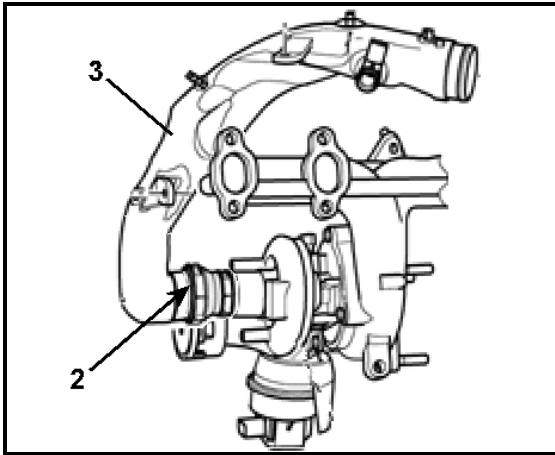


⇐ Remove bolt -1- securing intake air pipe -3-

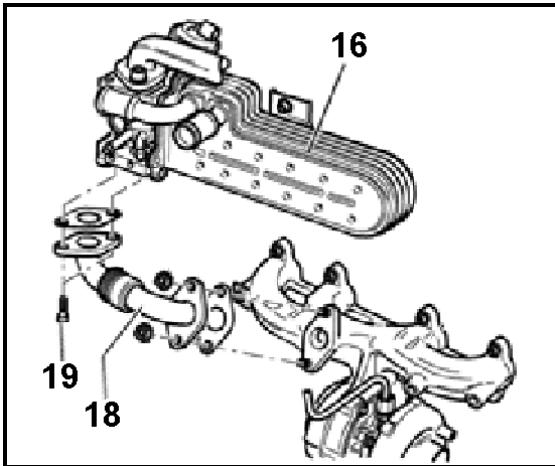
⇐ Remove vacuum hoses and harness from retainers -A- along air intake pipe



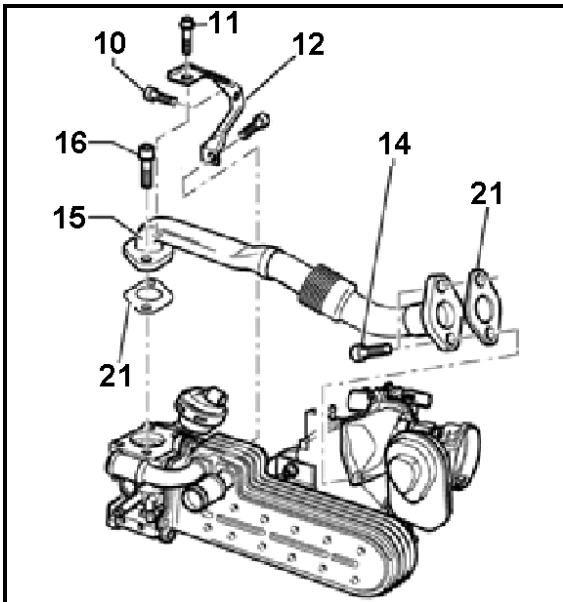
⇐ Raise vehicle and remove engine sound dampening pan -1-



- On New Beetle vehicles only, remove vacuum hose from retainer located near bottom of air intake pipe
- ⇐ Remove clamp -2- securing air intake pipe -3- to turbo and separate air intake pipe from turbo



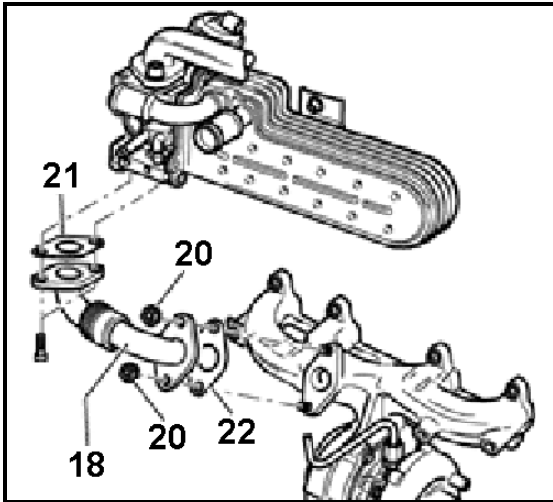
- ⇐ Remove screws -19- securing lower connector pipe -18- to EGR cooler -16-



- Lower vehicle and carefully remove previously loosened air intake pipe over EGR cooler

**!** Note: Clearance for air intake pipe is minimal; however, it can be removed by slowly and carefully guiding it around engine and body components

- ⇐ Remove screws -11-, -14- and -16-
- ⇐ Remove upper connector pipe -15- and gaskets -21-
- ⇐ Remove screw -10- securing bracket -12- to intake manifold



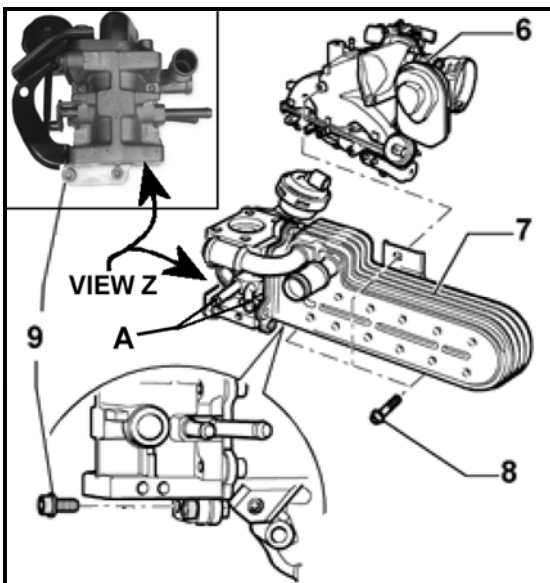
- ⇐ Remove nuts -20- securing lower connecting pipe to exhaust manifold
- ⇐ Remove lower connecting pipe -18- and gaskets -21- and -22-
- Open cap on coolant reservoir bottle to relieve any pressure and close cap
- Place pan (VAS 6208 or equivalent) under vehicle to catch coolant seepage



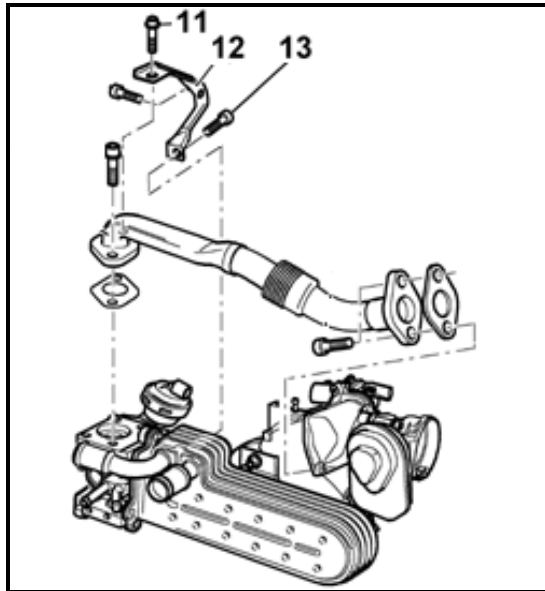
- Use clamps 3093 or equivalent and clamp off coolant hoses to EGR cooler
- ⇐ Remove clamps -1- and disconnect coolant hoses from EGR cooler



Tip: Illustration is for Jetta, however, New Beetle assembly is similar

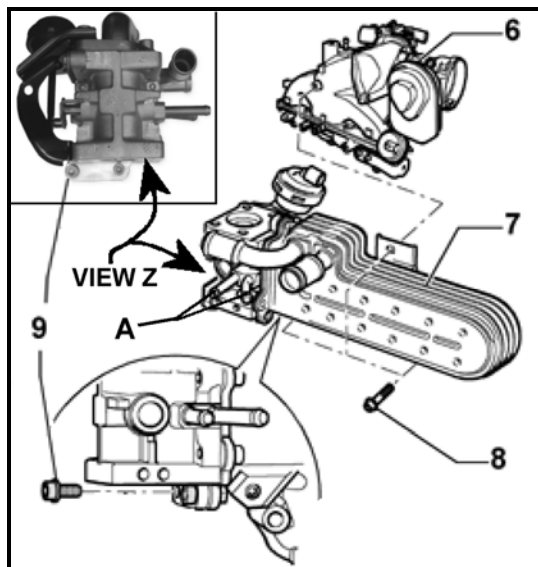


- ⇐ Remove screw -9- securing EGR cooler to intake manifold
- ⇐ Remove screws -8- and remove EGR cooler -7- from intake manifold -6-
- Make note of smaller diameter coolant hose locations connected to EGR cooler pipes -A-
- Use 3094 hose clamps and clamp off coolant hoses
- ⇐ Remove clamps securing coolant hoses to pipes -A- and disconnect coolant hoses



**!** Note: New part installation must be followed according to work step sequence to prevent stress

- ⇐ Remove screw -13- and bracket -12- from removed EGR cooler
- ⇐ Install bracket -12- onto new EGR cooler (038 131 512 J) from the repair kit and secure (hand tighten) with screw -13-
- ⇐ Hand start screw -11- to correctly position bracket -12- on regulating flap
- ⇐ Tighten screw -13- to 5 Nm (45 in. lbs.) and remove screw -11-
- ⇐ Reconnect 2 small diameter coolant hoses to pipes -A- on EGR cooler and secure with clamps
- Remove 3094 hose clamps
- ⇐ Position new EGR cooler -7- onto intake manifold -6- and secure (hand tighten) with (3) screws -8-



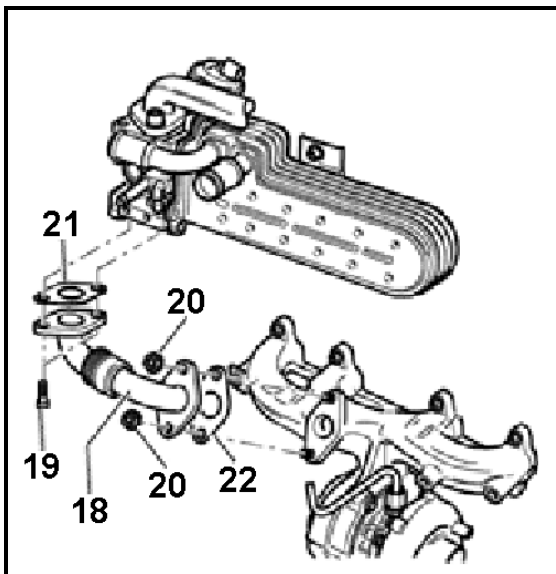
**!** Note: EGR cooler must be able to move about screws -8-

- ⇐ Secure EGR cooler to intake manifold with screw -9- and tighten to 10 Nm (89 in. lbs.)
- ⇐ Tighten (3) screws -8- to 10 Nm (89 in. lbs.)



⇐ Reconnect coolant hoses to EGR cooler and secure with spring clamps -1-

- Remove 3093 hose clamps

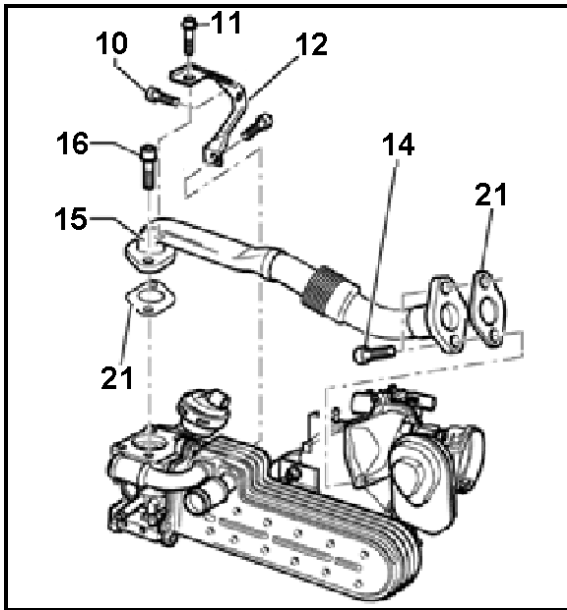


⇐ Using parts from kit, loosely install new lower connecting pipe -18- (038 131 521 CC) with new gasket -21- (069 131 547 D) and gasket (metal) -22- (038 131 547 A) and new nuts -20- (N 902 002 01)

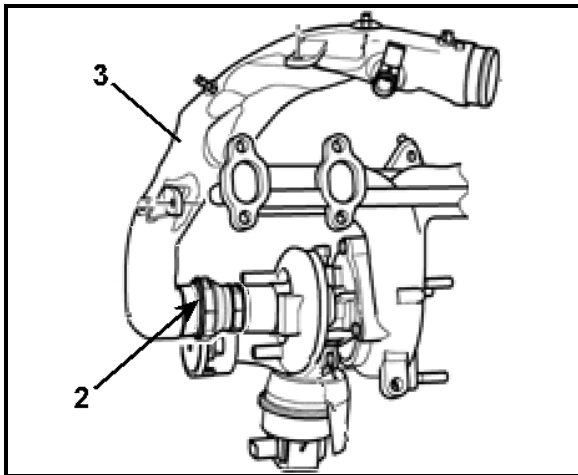
- Hand start screws -19- for securing lower connecting pipe to EGR cooler

⚠ Note: Screws -19- must be started before nuts -20- are tightened. Screws -19- will be tightened later in the procedure when vehicle is raised

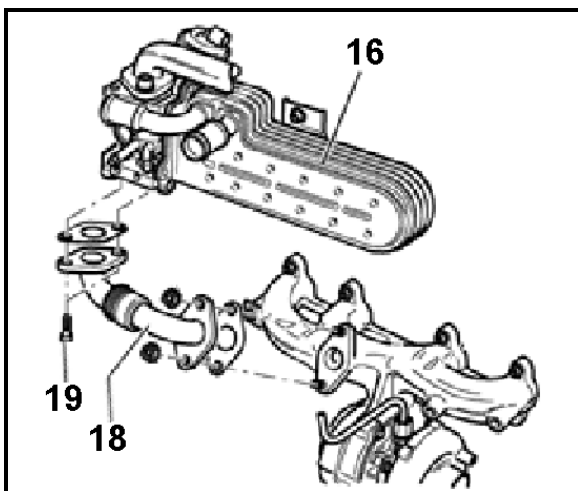
- Torque nuts -20- to 22 Nm (16 ft. lbs.)



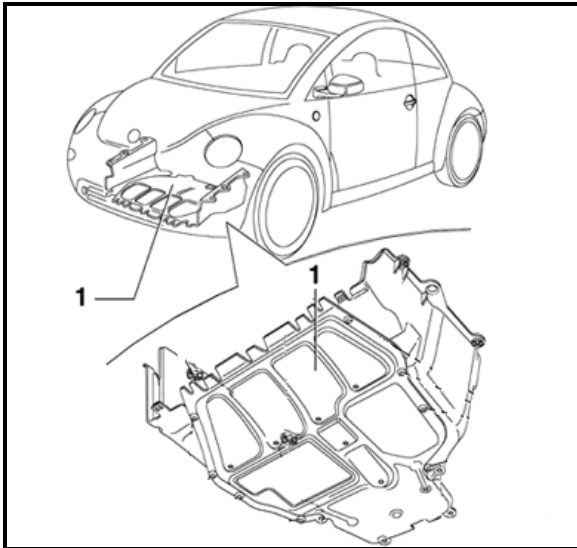
- ⇐ Reinstall upper connector pipe -15- with new gaskets -21- (069 131 547 D)
- ⇐ Hand start screws -11-, -14- and -16-
- ⇐ Secure bracket -12- to intake manifold with screw -10- and tighten to 10 Nm (89 in. lbs.)
- ⇐ Tighten screws -11-, -16- and -14- to 22 Nm (16 ft. lbs.)
- Carefully reinstall air intake pipe over EGR cooler



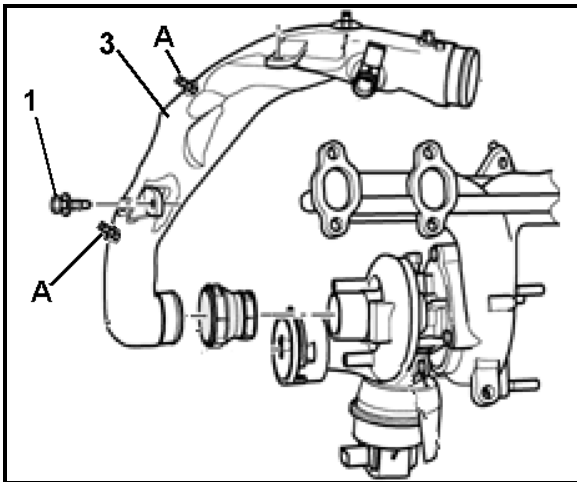
- ⇐ Raise vehicle insert air intake pipe -3- into turbo and secure with clamp -2-
- On New beetle vehicles only, insert vacuum hose into retainer located near bottom of air intake pipe



- ⇐ Tighten screws -19- for securing lower connector pipe -18- to EGR cooler -16- to 22 Nm (16 ft. lbs.)

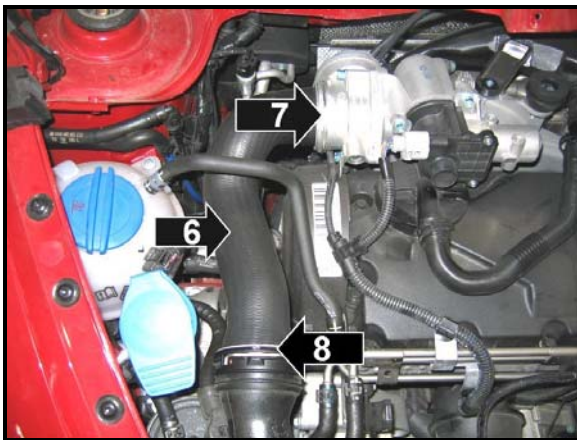


⇐ Reinstall engine sound dampening pan -1-



⇐ Lower vehicle and secure air intake pipe -3- with bolt -1-

- Insert vacuum hoses into retainers -A- on air intake pipe -3-

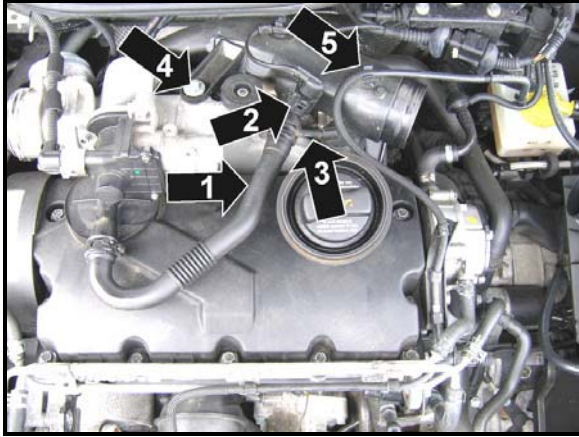


⇐ Reinstall charge air hose -6- and secure with clips -7- and -8-



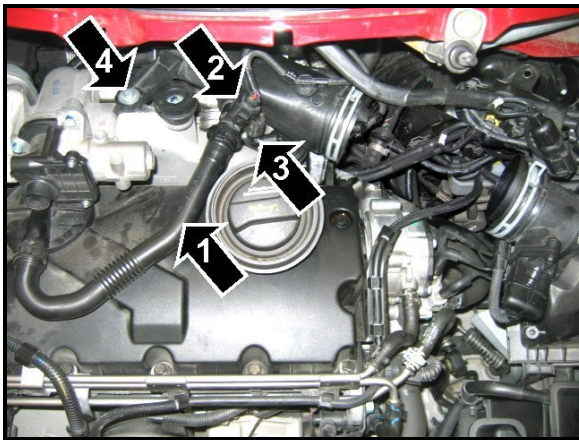
Tip: On some models, clip -8- shown in illustration may be different





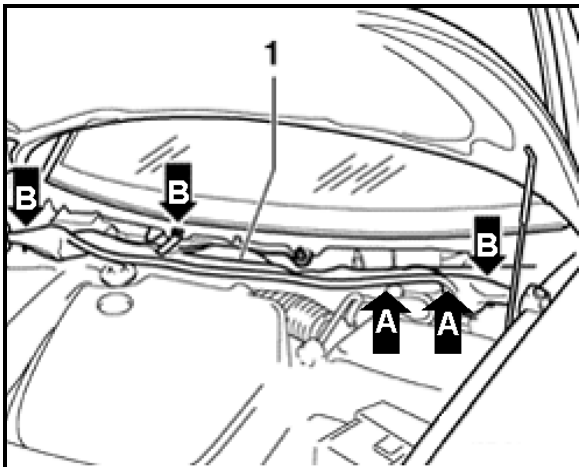
### For Golf and Jetta Vehicles Only

- ⇐ Secure air intake pipe to intake manifold with bolt -4-
- ⇐ Reconnect vacuum hose -3- to EGR cooler
- ⇐ Insert vacuum hose -5- into clip on air intake pipe
- ⇐ Reconnect air hose -1- to PCV valve
- ⇐ Reconnect connector -2- to crankcase air valve and insert harness into clip on air intake pipe



### For New Beetle Vehicles Only

- ⇐ Secure air intake pipe from intake manifold with bolt -4-
- ⇐ Reconnect vacuum hose -3- to EGR cooler
- ⇐ Reconnect air hose -1- to PCV valve
- ⇐ Reconnect connector -2- to crankcase air valve and insert harness into clip on air intake pipe



- ⇐ Reinstall plenum panel and secure with bolts -B-
- ⇐ Secure solenoid valves to plenum panel with 2 nuts -A-
- Insert vacuum hoses into retainers on underside of plenum panel



- Reinstall cowl panel
- Reinstall plenum panel seal
- ⇐ Reinstall windshield wiper arms, secure with nuts -arrows- and tighten to 20 Nm (15 ft. lbs.)
- Reinstall black caps over wiper arm nuts

### For All Vehicles

- Reinstall flexible air intake hose between air cleaner and air intake pipe and secure with clamps
- Reinstall foam sound deadener and engine cover
- Add coolant to vehicle using VAS 6096 Cooling system charge unit
- Start engine and check for coolant leaks
- **California Dealers ONLY:**  
**Fill out and affix emission recall completion label (part number ZVW 010 000) next to the vehicle emission control information label. Ensure recall completion label does not cover any existing label(s).**

**WORK IS COMPLETE**