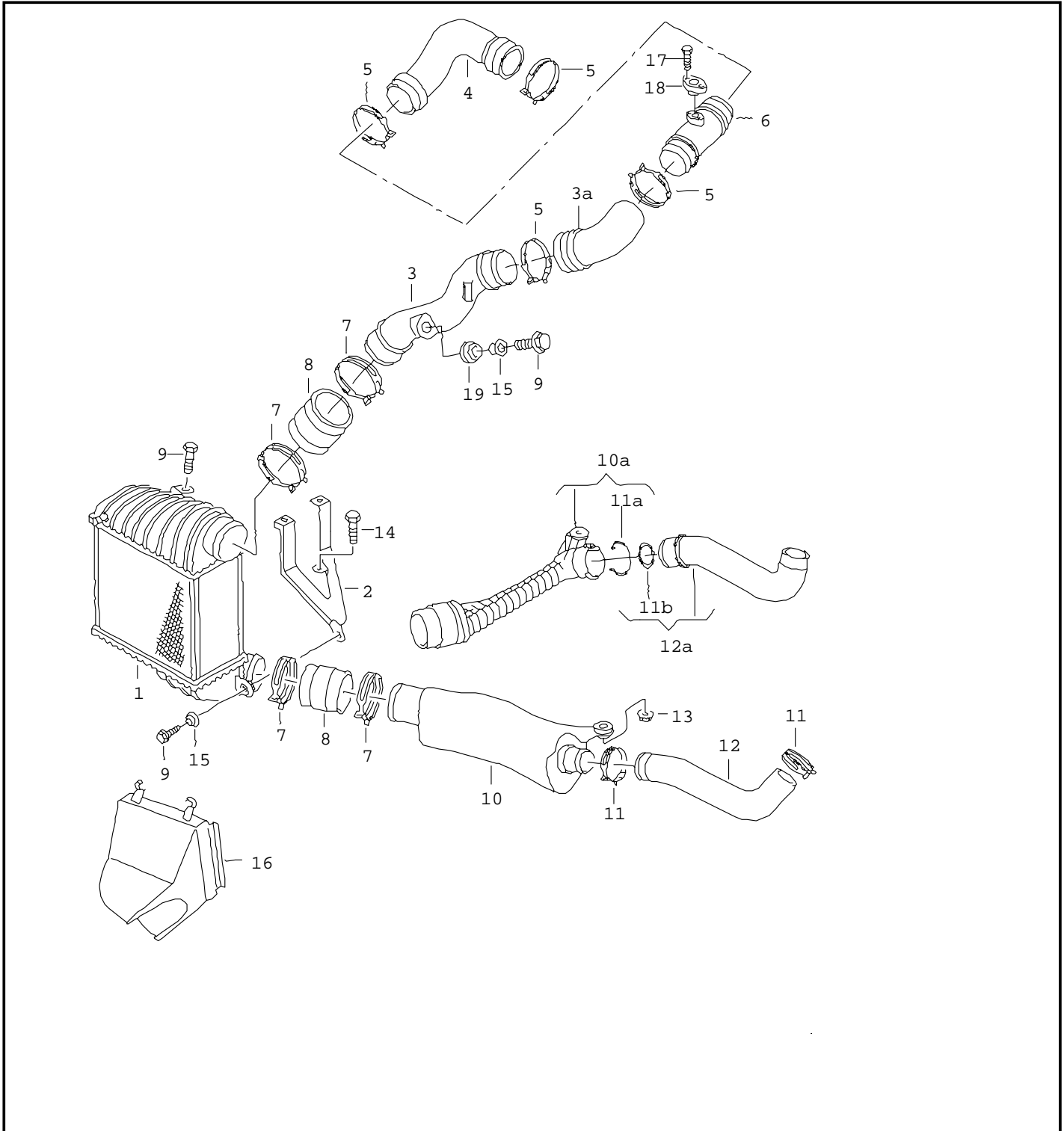




# ETKA



Model	Year	MG:	SG:	Illustration	Restrictions	Update		
JEM	05	1	45	145-80	>> 9M-5-149 9	615	23:53	15.04.2005





# ETKA



Model	Year	MG:	SG:	Illustration	Restrictions	Update		
JEM	05	1	45	145-80	>> 9M-5-149 9	615	23:53	15.04.2005

Pos	Part Number	Name	Remarks	Qty	Model
		charge air cooler	1.9ltr.		diesel eng.: ALH, BEW
1	1J0 145 803 F	charge air cooler		1	ALH
(1)	1J0 145 803 G	charge air cooler F >> 9M-3-144 047* as required use:	1J0 145 863 N 901 720 01 N 905 638 01	1 1 2 1	ALH
(1)	1J0 145 803 T	charge air cooler F 9M-3-144 048>>*		1	ALH
(1)	1J0 145 803 N	charge air cooler		1	BEW
(2)	1J0 145 808 C	bracket charge air cooler		1	
4	1J0 145 838 B	pressure hose		1	ALH
(4)	1J0 145 838 T	pressure hose		1	BEW
5	N 907 816 01	spring clip	60X12	2	
(6)	1J0 145 770 N	pressure pipe		1	
(6)	1J0 145 770 K	pressure pipe IM ZSB 1J0 145 762 Q		1	
(6)	1J0 145 770 Q	pressure pipe IM ZSB 1J0 145 762 AG/BA/BJ		1	BEW
7	N 906 562 01	spring clip	70X12	4	
8	1J0 145 834 A	pressure hose		2	ALH
(8)	1J0 145 834 T	pressure hose		1	BEW
9	N 907 506 01	bolt, hex. hd. (combi.)	M6X30-PC	3	
(10)	1J0 145 840 G	charge air tube		1	ALH
(10)	1J0 145 840 H	charge air tube		1	BEW
11	1H0 145 917 A	spring clip	44MM	2	
11A	1J0 145 769	retaining clip		X	BEW
11B	1J0 145 117	sealing washer		1	ALH, BEW
(11B)	1J0 145 117 J	sealing washer	43,95MM	1	BEW



# ETKA



Model	Year	MG:	SG:	Illustration	Restrictions	Update		
JEM	05	1	45	145-80	>> 9M-5-149 9	615	23:53	15.04.2005

Pos	Part Number	Name	Remarks	Qty	Model
12A	1J0 145 828 T	connecting hose		1	BEW,ALH
13	N 901 752 03	shouldered hex. nut		1	
14	N 100 829 07	bolt, hex. hd. (combi.)	M6X16-Z1	2	
15	867 129 669	grommet		1	
16		see illustration:	121-90		
17	N 901 720 01	tapping screw, fill. hd.	5X22	2	
18	038 906 051	thrust sensor F >> 9M-3-144 047*		1	ALH
(18)	038 906 051 B	thrust sensor F 9M-3-144 048>>*		1	ALH
(18)	038 906 051 B	thrust sensor		1	BEW
(18)	1J0 145 863	plug		1	
		- - - E N D - - -			