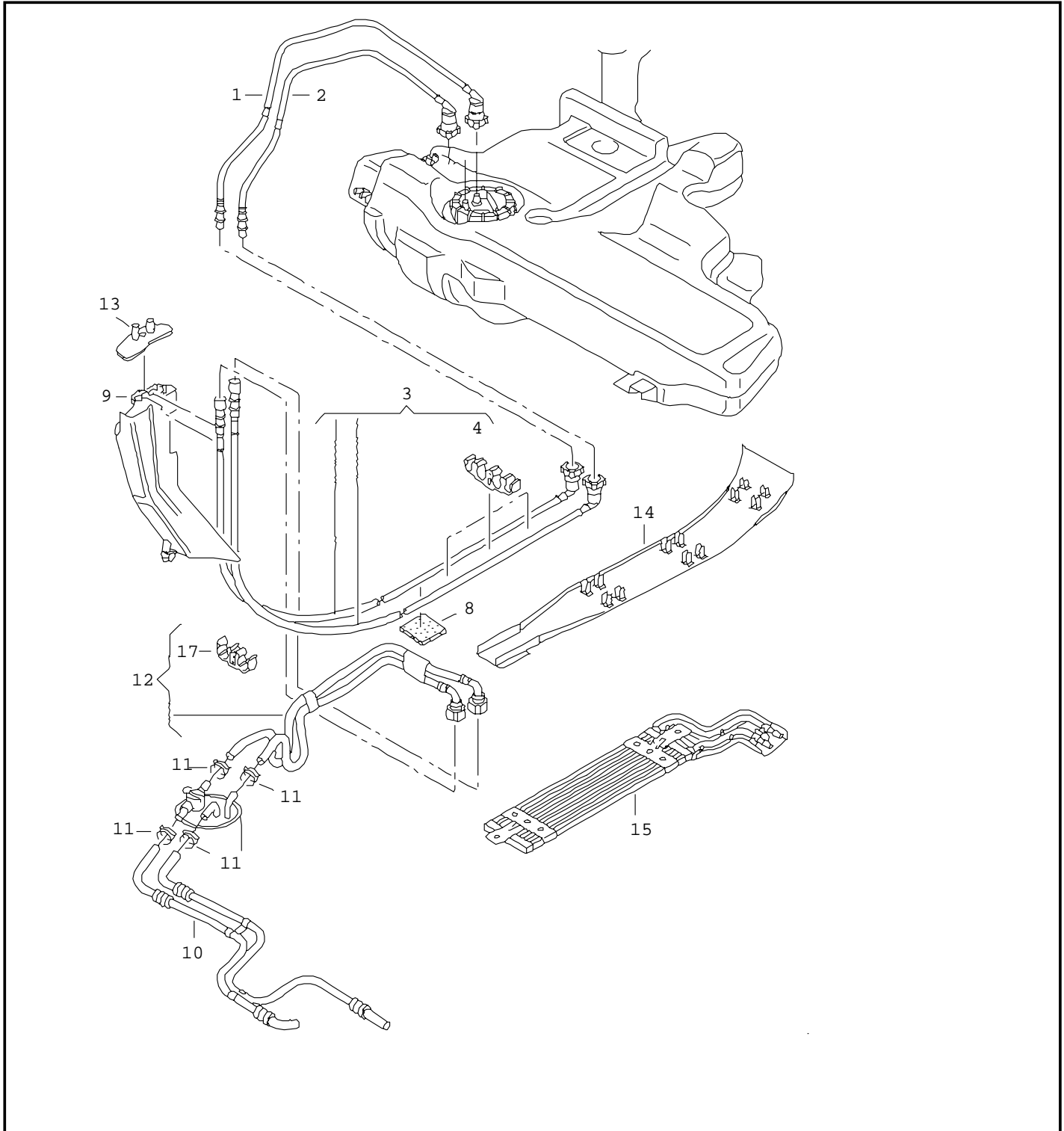




ETKA



Model	Year	MG:	SG:	Illustration	Restrictions	Update		
JEM	05	2	01	201-23	>> 9M-5-149 9	621	23:48	23.04.2005





E T K A



Model	Year	MG:	SG:	Illustration	Restrictions	Update		
JEM	05	2	01	201-23	>> 9M-5-149 9	621	23:48	23.04.2005

Pos	Part Number	Name	Remarks	Qty	Model
		fuel line fuel filter			diesel eng. with injection pump
1	1J0 201 293 H	fuel line	feed	1	PR-0F3+2LB PR-0F8+2LB
(1)	1J0 201 293 H	fuel line	feed	1	PR-0F9+2LC
(1)	1J0 201 293 N	fuel line	feed	1	PR-0F3+2LC PR-0F8+2LC
2	1J0 201 294 D	fuel line	return	1	
3	1J0 200 059 N	1 set of fuel pipes	feed/return	1	
(3)	1J0 200 059 Q	1 set of fuel pipes for vehicles with fuel cooling	feed/return	1	
4	1H0 201 449	clamp		X	
8	1H9 864 733	sound absorber for side member		2	
9	1J0 201 961 B	heat deflector		1	
10	1J0 130 307 B	1 set of fuel pipes	feed/return	1	manual gearbox+ ALH
(10)	1J0 130 307 C	1 set of fuel pipes F >> 9M-3-999 000*	feed/return	1	automatic+ ALH
(10)	1J0 130 307 Q	1 set of fuel pipes for automatic transmission F 9M-4-000 001>>	feed/return	1	automatic+ ALH
(10)	1J0 130 307 M	1 set of fuel pipes	feed/return	1	BEW
11	N 102 922 01	spring clip F >> 9M-3-999 000*	A14X12	X	
(11)	b N 906 867 01	spring clip F 9M-4-000 001>>	B14X12	X	
12	1J0 130 295 A	1 set of fuel pipes	feed/return	1	manual transmission
(12)	1J0 130 295 B	1 set of fuel pipes	feed/return	1	automatic



ETKA



Model	Year	MG:	SG:	Illustration	Restrictions	Update		
JEM	05	2	01	201-23	>> 9M-5-149 9	621	23:48	23.04.2005

Pos	Part Number	Name	Remarks	Qty	Model
13	1J0 201 970 C	cover heat deflector		1	
		F >> 9M-4-092 760*		1	
(13)	1J0 201 970 D	cover F 9M-4-092 761>>*		1	
14	1J0 201 488 C	cover for fuel pipes		1	
(14)	1J0 201 488 E	cover for fuel pipes for vehicles with rough road equipment		1	
15	1J0 201 894 A	heat dissipator		1	
17	1J0 130 325	bracket for fuel line		1	
24	1J0 201 469 B	cover fuel radiator		1	
		- - - E N D - - -			