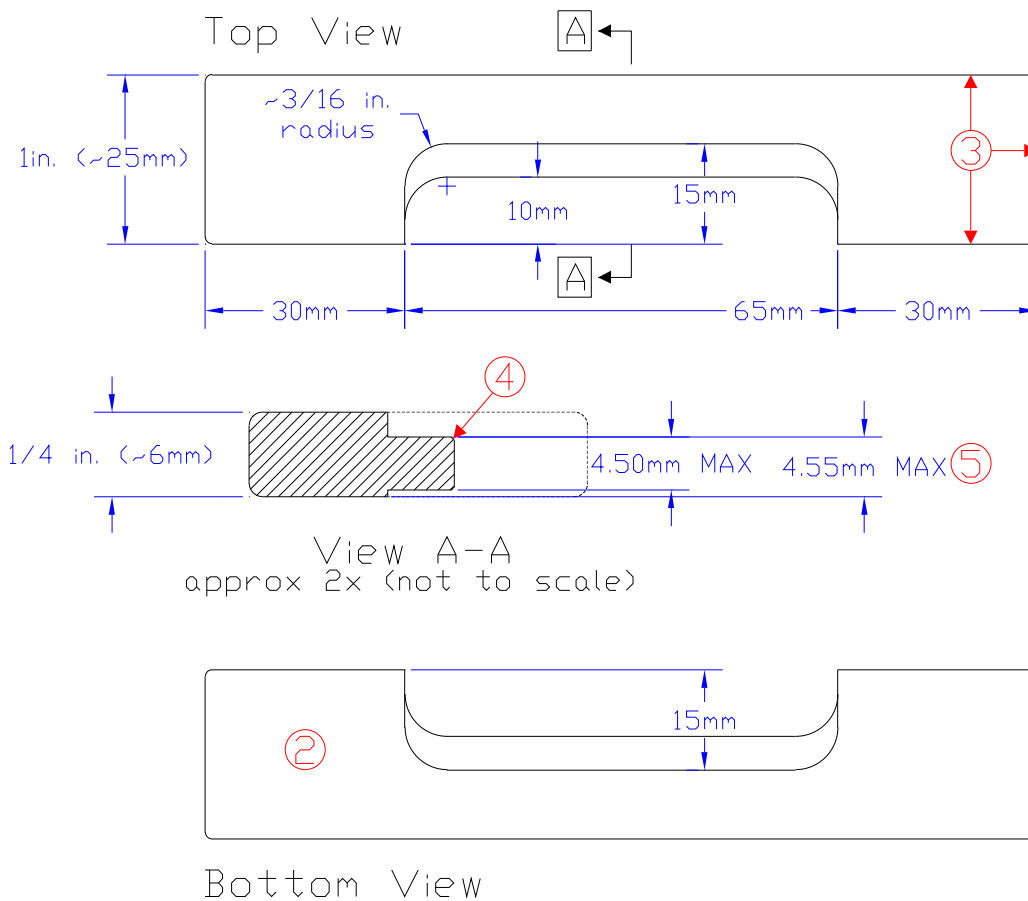


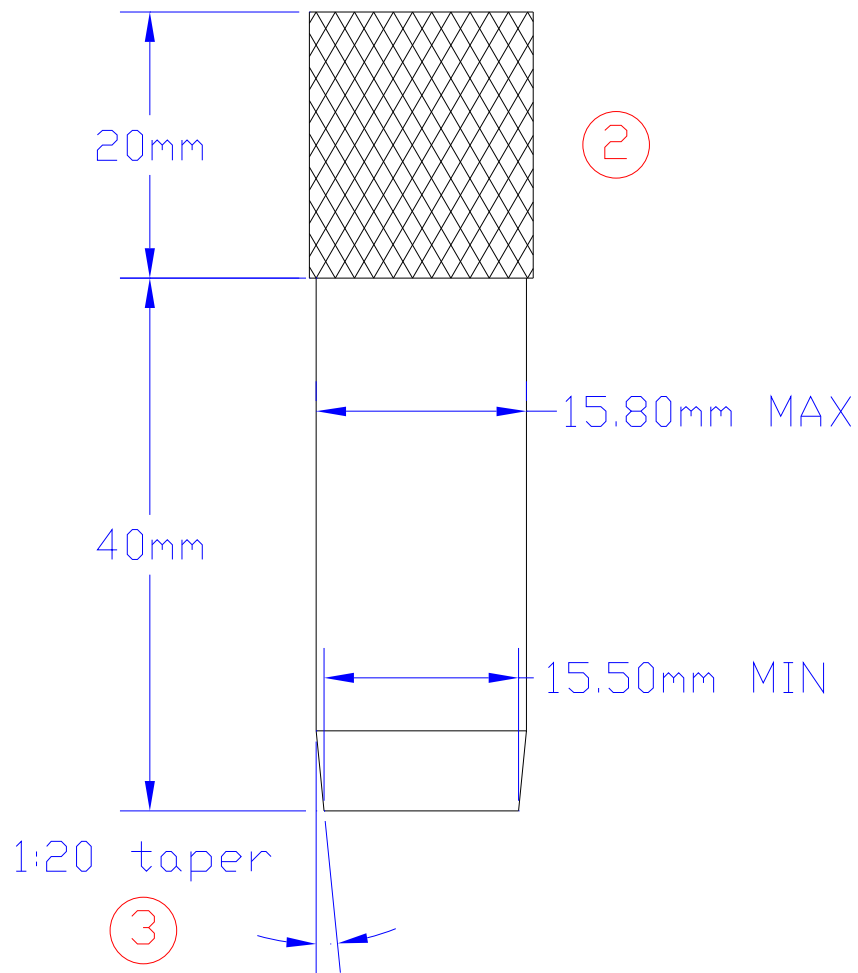
Camshaft Locking Tool (A3)



Notes

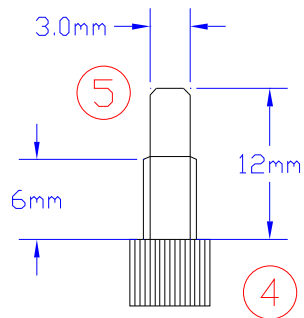
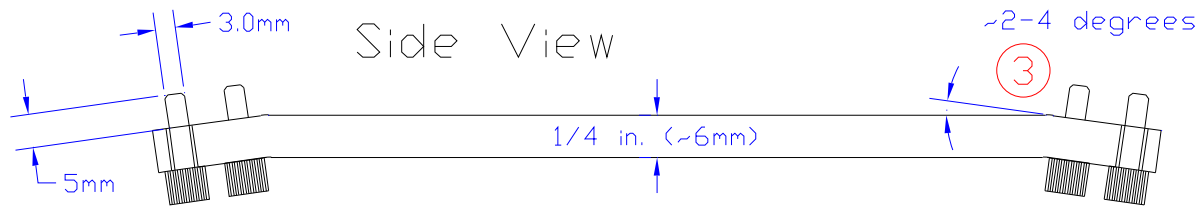
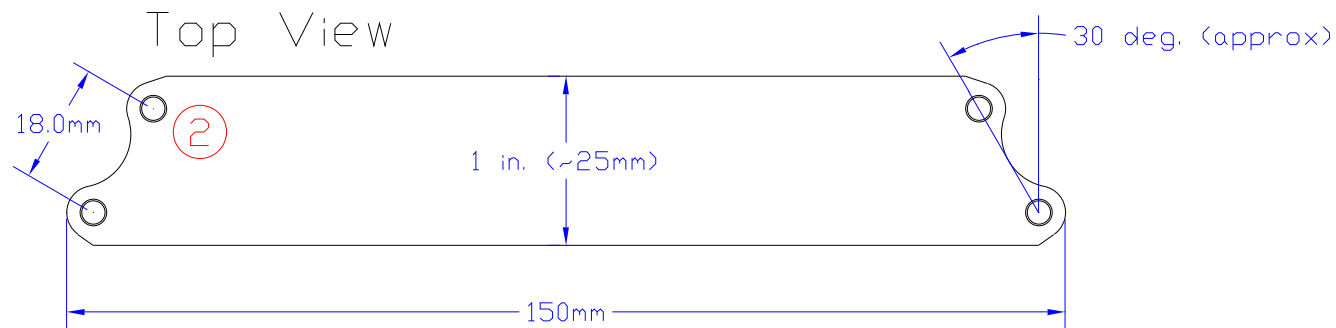
- 1) Mat'l: mild steel
- 2) Machine bottom surface flat
- 3) Radius outside edges to protect valve cover seal
- 4) Chamfer to assist entry into camshaft slot
- 5) Maybe 4.60mm will work. That would be a tight fit-- hard to align, but at least you wouldn't need no stinkin' shims!

Injector Pump Locking Pin (A3 VW TDI)



- 1) Mat'l: mild steel
- 2) Knurl grip
- 3) I am not certain of the taper (if any) but suspect it is a little stronger than quoted (drawing not to scale)

Tensioner Spanner

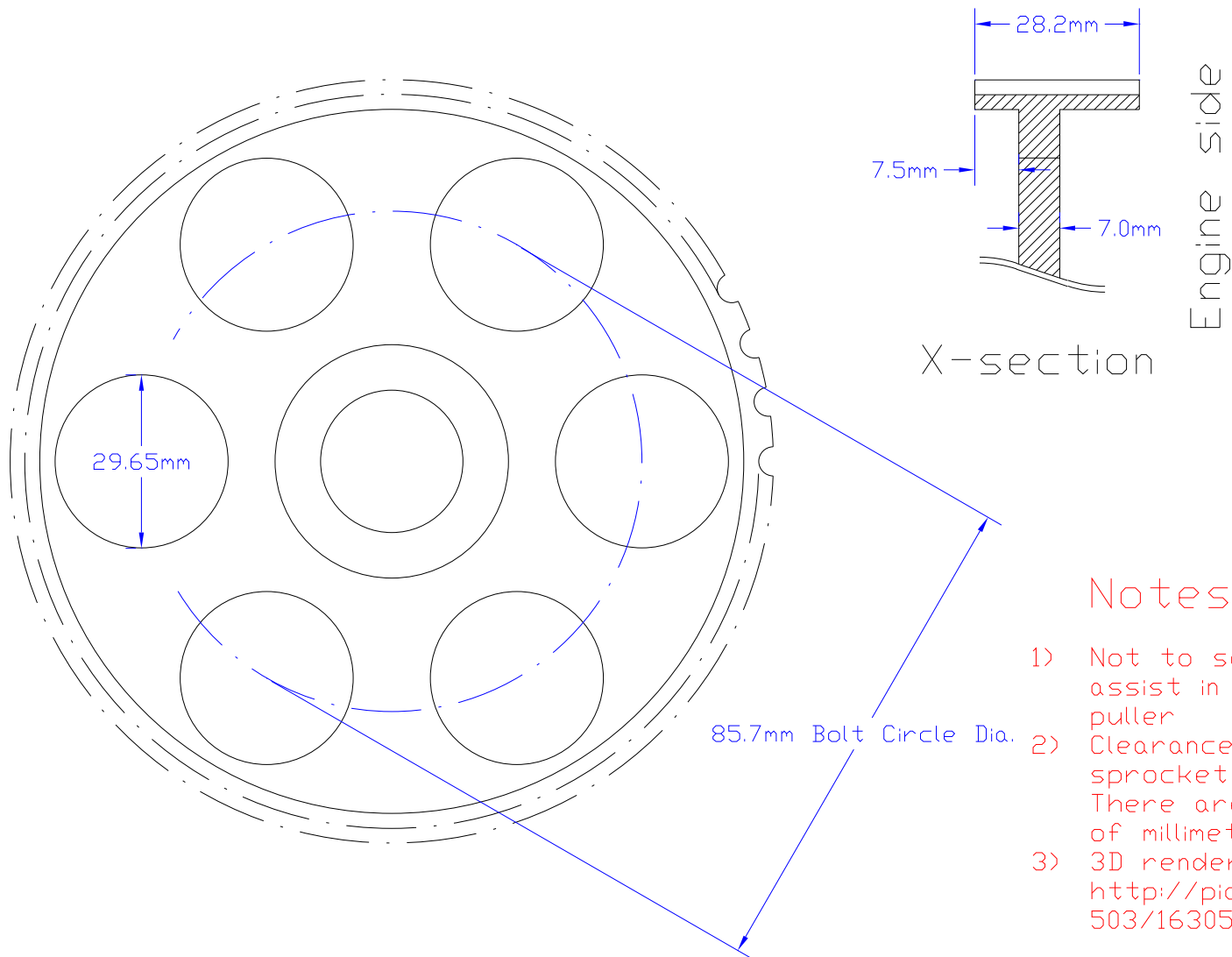


Spanner Pin (4 req'd)

Notes

- 1) Mat'l: mild steel
- 2) 8-32 screw thread (4 plcs)
- 3) Bend to provide clearance for opposite pins
- 4) 8-32 machine screw turned to fit tensioner
Note 3mm does not quite clear threads
If this bothers you, use 10-32 screws
- 5) Chamfer end to assist pin entry
- 6) Tensioner: 3.5mm holes, 18.0mm spacing, 5mm depth

Camshaft Sprocket - A3 TDI



Notes

- 1) Not to scale - dimensions to assist in making spanner and puller
- 2) Clearance on backside of sprocket not recorded
There are at least a couple of millimeters there
- 3) 3D render of spanner at:
http://pics.tdiclub.com/data/503/16305cam_spanner3D.jpg